



SRD Design
CORPORATION

Fenestration Specialists!

Series 5000
By Champion Window & Door
Syosset, New York
Design by: SRD Design-2002



*Series 5000
By Champion Window & Door
Syosset, New York
Design by: SRD Design-2002*

ENGINEERING SPECIALISTS

DIVERSITY

From architectural to residential grade windows and doors, SRD Design Corporation can design a system to meet your requirements.

We have you covered from aluminum to vinyl, even wood.

WE OFFER COMPLETE DESIGN PACKAGES INCLUDING:

- ? Assembly Drawings
- ? Extrusion Die Details
- ? Fabrication Drawings
- ? Bill of Materials (Excel Spreadsheets)
- ? Structural Load Calculations
- ? Custom Hardware Drawings
- ? Proto-typing & Sample Units

SRD Design can also help you with your shop & installation drawings.

DESIGNS THAT WORK !

Window designs are developed with the production tooling in mind. Our designs incorporate the use of standard hardware and placement. This ensures fabrication does not punch in places where walls interfere.

SPECIALIZING IN CUSTOM, PROPRIETARY DESIGNS

Double Hung Tilt & Side Load
Single Hung Tilt & Side Load
Horizontal Slider
Picture / Fixed Windows
Project-In / Project-Out / Casement
Tilt & Turn
Storefront & Curtain Wall
Sliding Glass Doors
Terrace & Swing Doors
Sub-Sills & Receptor Systems
Trim & Clip
Panning

**GIVE US A CALL
to have SRD DESIGN
quote on your next
Project!**

TOOLING

SRD Design CORPORATION

TOOLING SPECIALISTS

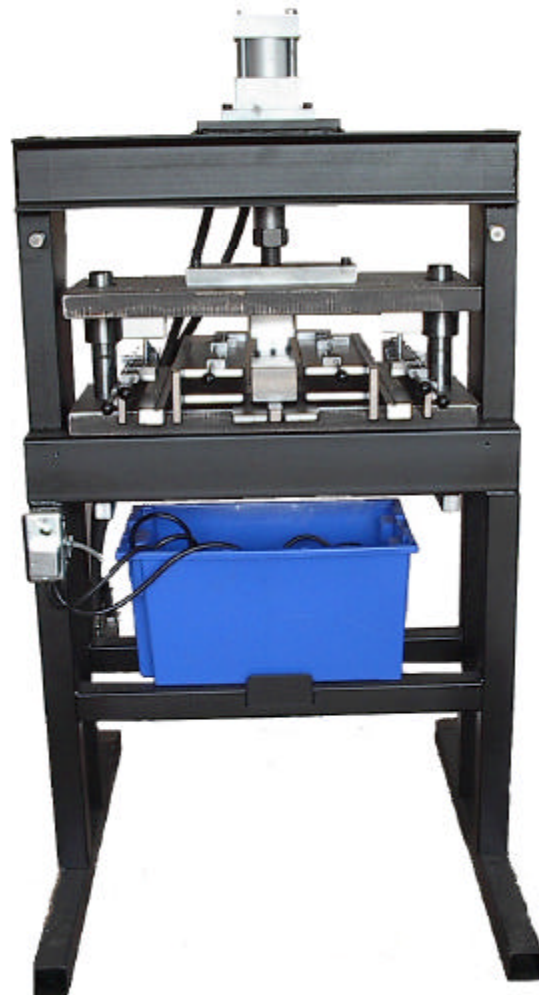
TRUST your next tooling job to SRD Design Corporation.

WE OFFER A COMPLETE LINE OF :

- ? Punch Press Tooling
- ? Corner Key Crimpers
- ? Automated Drill Machines
- ? Milling Machines
- ? Copy Routers
- ? Hydraulic Pumps
- ? Hydraulic & Pneumatic Presses

COMPARE our quality and value against any other equipment manufacturer. Dollar for Dollar, we offer the **BEST** equipment in the industry, **BAR NONE!**

PRODUCTION oriented tooling that enables you the manufacturer to reduce time and costs in the fabrication process.



SRD Design Uses:

1-1/2" Thick Lid & Shoe
Stressed Relieved & Ground Die Sets
1-1/2" Pins & Bushings
Heavy Duty Bushing Clamps
Adjustable Open & Shut Height
Hardened Stop Blocks
Universal Bridge Over Die Stands
Scrap Bins Standard
Clear Lexan Guards
25,000 Pound PSI Stand Rating
6" Minimum Out-Rigger Length
Steel Block Extrusion Guided

Our Competitors Use:

1-1/4" Thick Lid & Shoe
1-1/4" Pins & Bushings
Non-Adjustable Open & Shut Height
Cold Rolled Steel Stop Blocks
Flat Die Stands
Guide Extrusions with Dowel Pins

"THE COMPETITION FALLS SHORT!"

Phone: (717) 792-6501 Fax: (717) 792-6602
Email: info@srddesign.com Website: www.srddesign.com

COMPARE



Product Development Guide

The following is a list of detailed, contracted agreements for SRD Design Corp., further referred to as us or we. We are liable only for the information provided below or as agreed by quotation supplied.

Assembly Drawings: Drawing(s) detailing horizontal and vertical projections of product(s). Assembly includes all extrusions, hardware, fasteners, and forms of weather-stripping where applicable at full scale, unless otherwise specified. Customer must approve Assembly Drawing(s) before we proceed with other aspects of project.

Structural Calculations: Calculation(s) to correspond with desired rating per contract. Calculations are based on the AAMA 103.3 Procedural Guide.

Bill of Materials: Bill of Material(s) with the part name of extrusion, hardware, fastener and forms of weather-stripping, corresponding drawing numbers related to project number, extrusion wt. per. ft. where applicable, cut length formulas for all extrusions (as they pertain to their corresponding Assembly Drawing), vendors for hardware (specked out by us but not limited to).

Extrusion Drawings: Drawings detailing all necessary dimensions and tolerances. Extrusion Drawings also include all weights and areas of extrusion (when of known material) and moments of inertia. All drawings are sent either by customer, or by us to extruder (when applicable). Extruder drawings to be checked by us prior to release for production.

Fabrication Drawings: Drawing(s) detailing fabrication of extrusion (as they pertain to their corresponding Assembly Drawing), and all necessary dimensions and tolerances. Fabrication Drawings will be noted with other corresponding design applications and typical hardware specked out by us.

Screen Charts: Screen Chart(s) with cut length formulas (as they pertain to their corresponding Assembly Drawing when applicable).

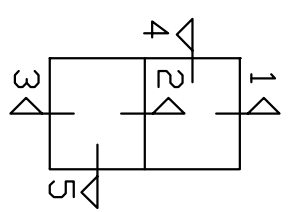
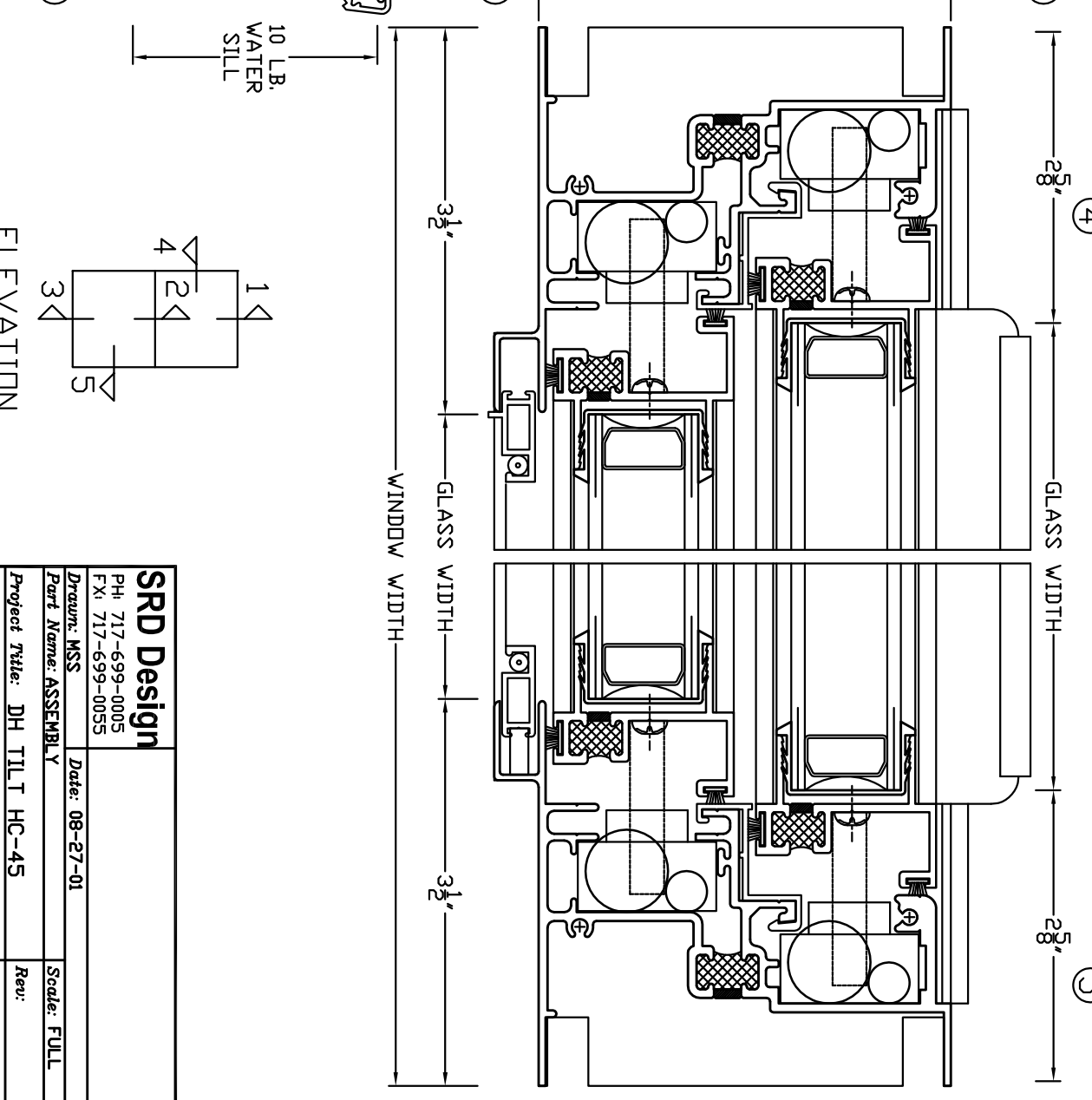
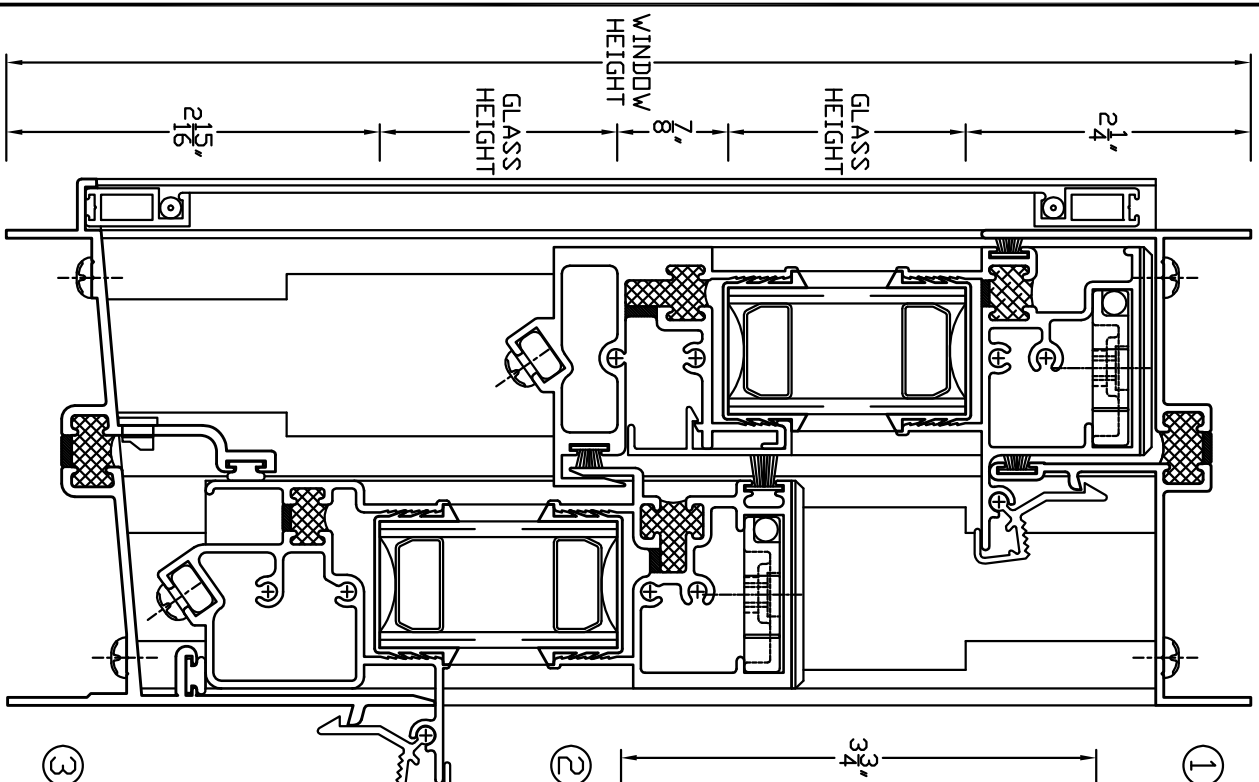
Installation Drawings: Drawing(s) detailing installation of product (not liable for actual installation of product in any way or manner) as requested by customer's application.

Revisions of all drawings: We will revise Assembly Drawing(s) prior to final approval. If revisions are requested after final approval of Assembly Drawing(s), customer may be informed of additional charges to corresponding contract prior to revisions being made.

Sample Units: We will supply sample unit(s) of contracted product. Sample will be proto-typed to show function fit and general appearance of the product.

Testing: We can provide the necessary lab assistance to obtain the specification as outlined in the design features. This quotation is based upon the testing being performed in York, PA. Should any other locale be required, traveling expenses will be charged. The actual costs of testing are not included in this proposal unless specifically stated.

Additional Requests: Any additional requests that the customer deems vital for a contract to be valid should be made verbal to us prior to a signed contract. We will evaluate the request, and if practical and agreeable by both parties, will be re-written into a revised contract, and resubmitted to customer.



ELEVATION

SRD Design	
PH: 717-699-0005	
FX: 717-699-0055	
Drawn: MSS	Date: 08-27-01
Part Name: ASSEMBLY	Scale: FULL
Project Title: DH TILT HC-45	Rev:
Project No: 1081-A-01	Series:

SRD Design

Bill of Materials and Sources

Quantity 1
 Window Width 36
 Window Height 60
 Double Hung
 Aluminum Extrusions

WW=WINDOW WIDTH
 WH=WINDOW HEIGHT

Customer Your Company Name
 Project No. 1081-B-01
 Ref. Assembly 1081-A-01
 Double Hung Tilt
 HC-45

ITEM	QTY.	NAME	SRD FAB. DWG. #	LBS/FT.	LENGTH (IN)	FORMULA	EST. WT.	SOURCE	SRD EXTRU. #
1	1	HEAD	1081-F-01	0.691	36	WW	2.073		1081-E-01
2	1	SILL	1081-F-02	1.079	36	WW	3.237		1081-E-02
3	2	JAMB	1081-F-03	1.493	58 1/2	WH - 1 1/2"	14.557		1081-E-03
4	1	TOP RAIL	1081-F-04	0.758	29 3/16	WW - 6 13/16"	1.844		1081-E-04
5	1	KEEPER RAIL	1081-F-05	1.026	29 3/16	WW - 6 13/16"	2.496		1081-E-05
6	1	LOCK RAIL	1081-F-06	0.830	30 7/8	WW - 5 1/8"	2.136		1081-E-06
7	1	BOTTOM RAIL	1081-F-07	0.808	30 7/8	WW - 5 1/8"	2.079		1081-E-07
8	2	TOP STILES	1081-F-08	0.421	29 11/16	(WH / 2) - 5/16"	2.083		1081-E-08
9	2	BOTTOM STILES	1081-F-08	0.421	29 11/16	(WH / 2) - 5/16"	2.083		1081-E-08
10	2	TOP SASH STOP	1081-F-09	0.335	8	8"	0.447		1081-E-09
11	2	BOTTOM SASH STOP	1081-F-09	0.335	6	6"	0.335		1081-E-09
12	1	TOP SNAP LATCH	1081-F-15	0.148	28 11/16	WW - 5/16"	0.354		1081-E-15
13	1	BOTTOM SNAP LATCH	1081-F-15	0.148	30 3/8	WW - 6 5/8"	0.375		1081-E-15
Total Weight							34.097		

Vinyl Extrusions

ITEM	QTY.	NAME	SRD FAB. DWG. #	LBS/FT.	LENGTH (IN)	FORMULA	EST. WT.	SOURCE	SRD EXTRU. #
14	2	JAMB VINYL	1081-F-03	0.067	58 1/2	WH - 1 1/2"	0.653		1081-V-01
15	1	KEEPER RAIL VINYL	1081-F-05	1.079	29 3/16	WW - 6 13/16"	2.624		1081-V-02
Total Weight							3.278		

Hardware Parts

ITEM	QTY.	NAME	PART #	Cost Per.	LENGTH (IN)	Total	SOURCE
16	2	Lock Housing & Cam	9013 & 9018	\$0.90		\$1.80	Truth
17	2	Keeper	9004	\$0.35		\$0.70	Truth
18	2	Gaer Weep Cover		\$0.09		\$0.18	Gaer
19	1	Wrap-Around Marine Glazing		\$0.06	227 1/4	\$0.06	Boston Retail
20	2	Top Sash Cap	1081-H-01	\$0.28		\$0.56	SRD Design Corp.
21	2	Bottom Sash Cap	1081-H-02	\$0.28		\$0.56	SRD Design Corp.
22	4	Tilt Latch	SRD-011	\$0.53		\$2.12	SRD Design Corp.
23	4	Tilt Latch Spring	SRD-003	\$0.09		\$0.36	SRD Design Corp.
24	2	Snap Latch Springs	SRD-004	\$0.03		\$0.06	SRD Design Corp.
25	4	Pivot Bar	SRD-002	\$0.60		\$2.40	SRD Design Corp.
26	4	Rubber Bumper	SRD-009	\$0.65		\$2.60	SRD Design Corp.
27	4	Ultra-Lift Balances	Per Caldwell	\$8.20		\$32.80	Caldwell
28	4	Pencil Balances	Per Caldwell	\$5.80		\$23.20	Caldwell
29	4	Balances Shoe	16H033	\$0.40		\$1.60	Caldwell
Total						\$69.00	

Weatherstripping & Bulb Seals

ITEM	QTY.	NAME	Spec.	Cost Per/Ft.	LENGTH (IN)	Total	SOURCE
30	1	Head Weatherstripping	.180 HG. X .270 BK	\$0.08	36	\$0.23	
31	1	Top Rail Weatherstripping	.190 HG. X .270 BK	\$0.08	29 3/16	\$0.18	
32	1	Keeper Rail Weatherstripping	.220 HG. X .270 BK	\$0.08	29 3/16	\$0.18	
33	1	Lock Rail Weatherstripping	.220 HG. X .270 BK	\$0.08	30 7/8	\$0.19	
34	4	T & B Stile Ext. Weatherstripping	.190 HG. X .270 BK	\$0.08	29 11/16	\$0.74	
35	4	T & B Stile Int. Weatherstripping	.190 HG. X .187 BK	\$0.08	29 11/16	\$0.74	
36	2	Sill Bulb Seal	.230 HG. X .270 BK	\$0.12	36	\$0.72	
Total						\$2.99	

Fasteners

ITEM	QTY.	NAME	PART #	Cost Per	LENGTH (IN)	Total	SOURCE
37	8	Frame Screws	#8x1 PPH	\$0.02		\$0.16	Local Vendor
38	8	Sash Screws	#8x1 PFH	\$0.02		\$0.16	Local Vendor
39	2	Lock Screws	#10x1/2 PFH	\$0.02		\$0.04	Local Vendor
40	2	Keeper Screws	#6x3/4" PFH	\$0.02		\$0.04	Local Vendor
41	8	Balance Screws	#8x1" PFH	\$0.02		\$0.16	Local Vendor
42	4	Pivot Bar Screws	#8-32 x 3/8" Mach.	\$0.02		\$0.08	Local Vendor
43	4	Tilt Latch Screws	#8-32 x 1/2" Mach.	\$0.04		\$0.16	Local Vendor
44	8	Sash Stop Bumper Screws	#8x 3/4" PPH	\$0.04		\$0.32	Local Vendor
Total						\$1.12	

Glass Cut Lengths

ITEM	QTY.	NAME	Cost Per.	Width	Height	Total	SOURCE
45							
46	1	TOP GLASS 1" I.G.	\$4.50	29	x 27	\$65.25	Local Vendor
47	1	BOTTOM GLASS 1" I.G.	\$4.50	30 5/8	x 27	\$68.91	Local Vendor
Total						\$134.16	

Aluminum Extrusion	Approx. Cost	
Vinyl Extrusion	Approx. Cost	
Hardware	Approx. Cost	\$69.00
Weatherstripping & Bulb Seal	Approx. Cost	\$2.99
Fasteners	Approx. Cost	\$1.12
Glass	Approx. Cost	\$134.16
	Approx. Total	\$207.27

Note: All costs are approximate/some prices may vary
 Bill of material does not include screen assembly or pricing



Tooling Development Guide

The following is a list of detailed, contracted agreements for SRD Design Corp., further referred to as us or we. We are liable only for the information provided below or as agreed by quotation supplied.

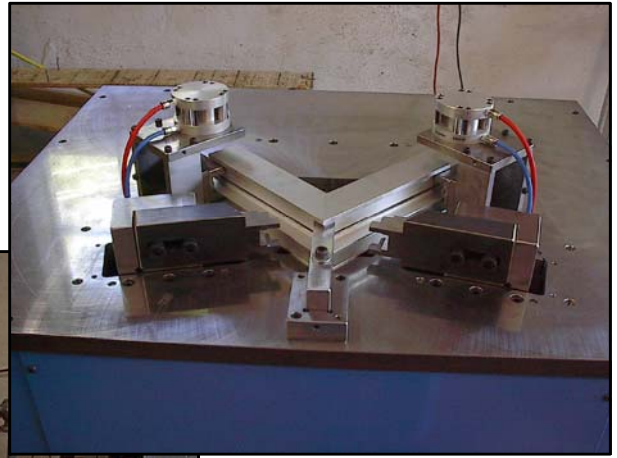
Fabrication Tooling: We provide fully detailed assembly drawings and details of each die. Commercially available punches and other parts are used in tooling and when required any custom parts are detailed to provide replacement of worn parts with minimal effort and cost. Tooling is custom built for maximum production. Guards are provided both front and back of the tooling

Presses: We provide either air or hydraulic presses, with foot pedal control, to actuate the tooling. When purchased with tooling dies will be installed into the presses for a turn-key installation.

Sample Units: We will supply sample unit of contracted product(s). Sample will be processed from production tooling to show function fit and general appearance of the product.

Testing: We can provide the necessary lab assistance to obtain the specification as outlined in the design features. This quotation is based upon the testing being performed in York, PA. Should any other locale be required, traveling expenses will be charged. The actual costs of testing are not included in this proposal unless specifically stated.

Additional Requests: Any additional requests that the customer deems vital for a contract to be valid should be made verbal to us prior to a signed contract. We will evaluate the request, and if practical and agreeable by both parties, will be re-written into a revised contract, and resubmitted to customer.



SRD Design

PH: 717-699-0005
 FX: 717-699-0055

SRD Design Corporation

Drawn: SRD

Date: 05/01

Part Name:

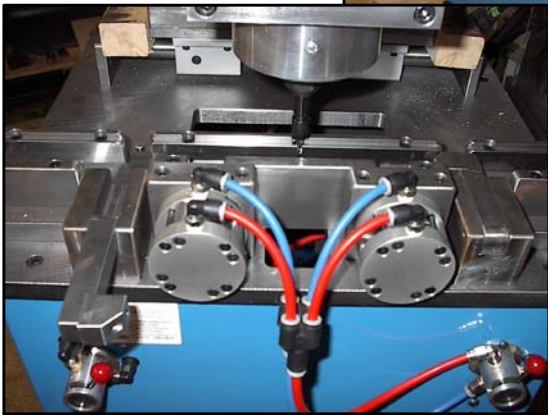
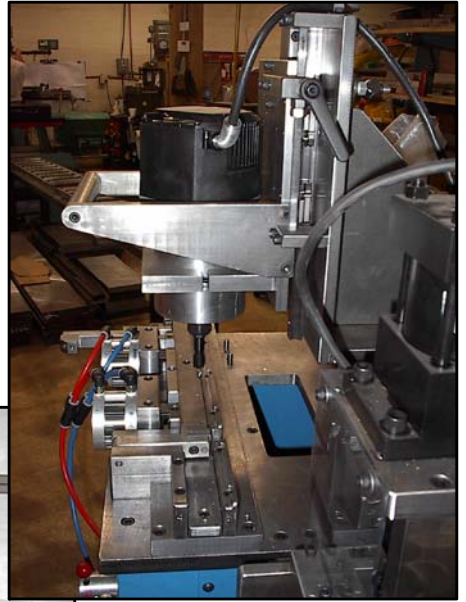
Scale: N.T.S.

Project Title: CORNER CRIMPER

Rev:

Project No:

Series:



SRD Design

PH: 717-699-0005
 FX: 717-699-0055

SRD Design Corporation

Drawn: SRD

Date: 05/01

Part Name:

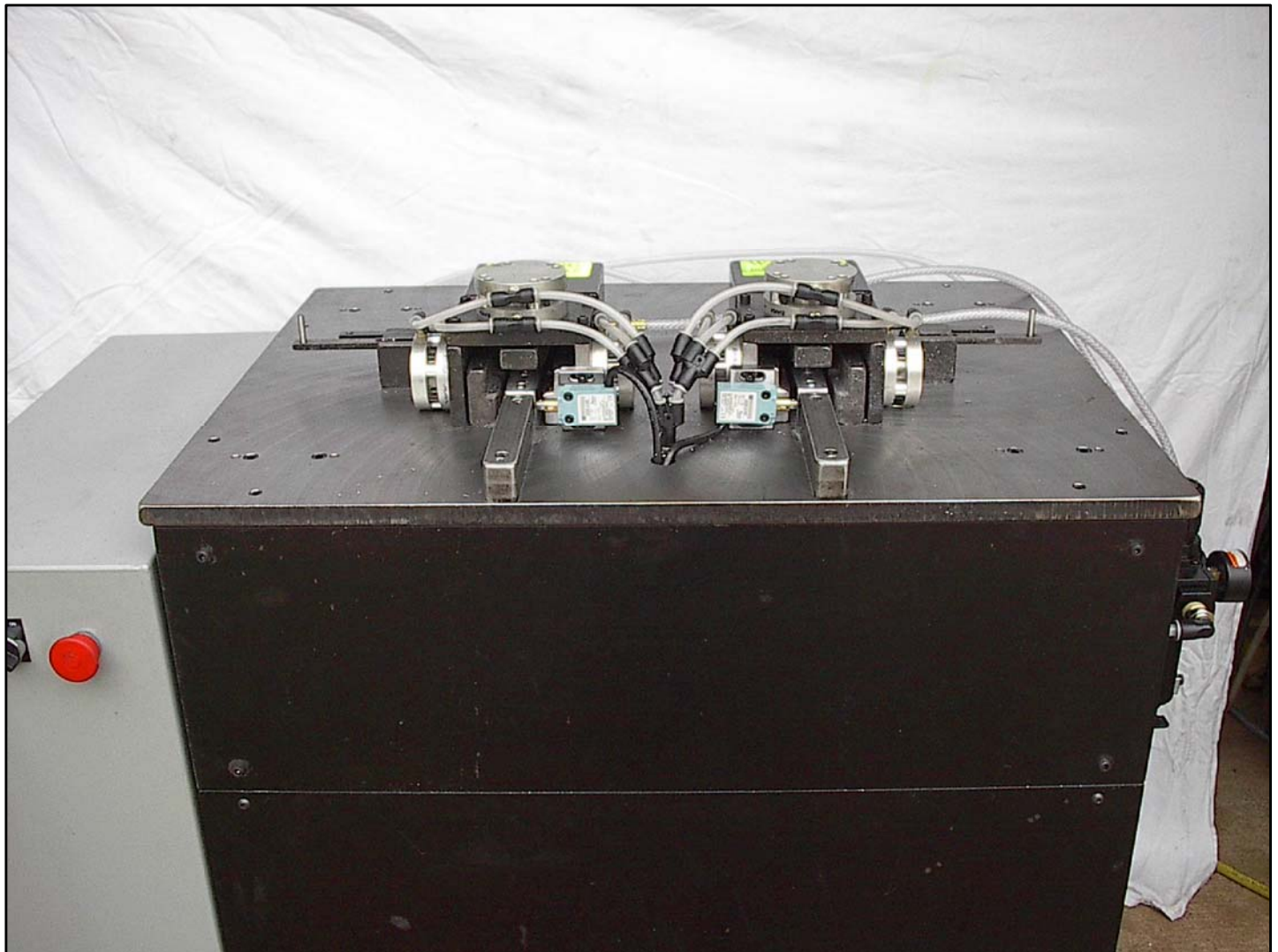
Scale: FULL

Project Title: COPY ROUTER

Rev:

Project No:

Series:



SRD Design

PH: 717-699-0005
FX: 717-699-0055

SRD Design Corporation

Drawn: SRD

Date: 05/01

Part Name:

Scale: FULL

Project Title: DUAL MILLING MACHINE

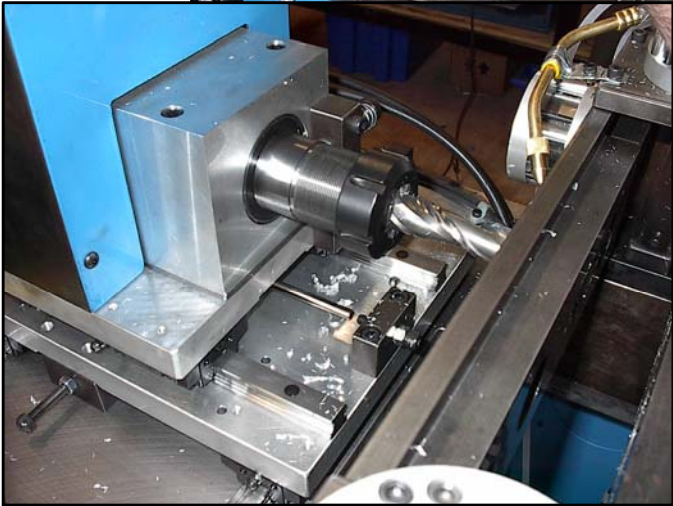
Rev:

Project No:

Series:



SRD Design		SRD Design Corporation	
PH: 717-699-0005 FX: 717-699-0055			
<i>Drawn:</i> SRD		<i>Date:</i> 05/01	
<i>Part Name:</i>		<i>Scale:</i> FULL	
<i>Project Title:</i> END MILLING MACHINE		<i>Rev:</i>	
<i>Project No:</i>		<i>Series:</i>	



SRD Design

PH: 717-699-0005
 FX: 717-699-0055

SRD Design Corporation

Drawn: SRD

Date: 05/01

Part Name:

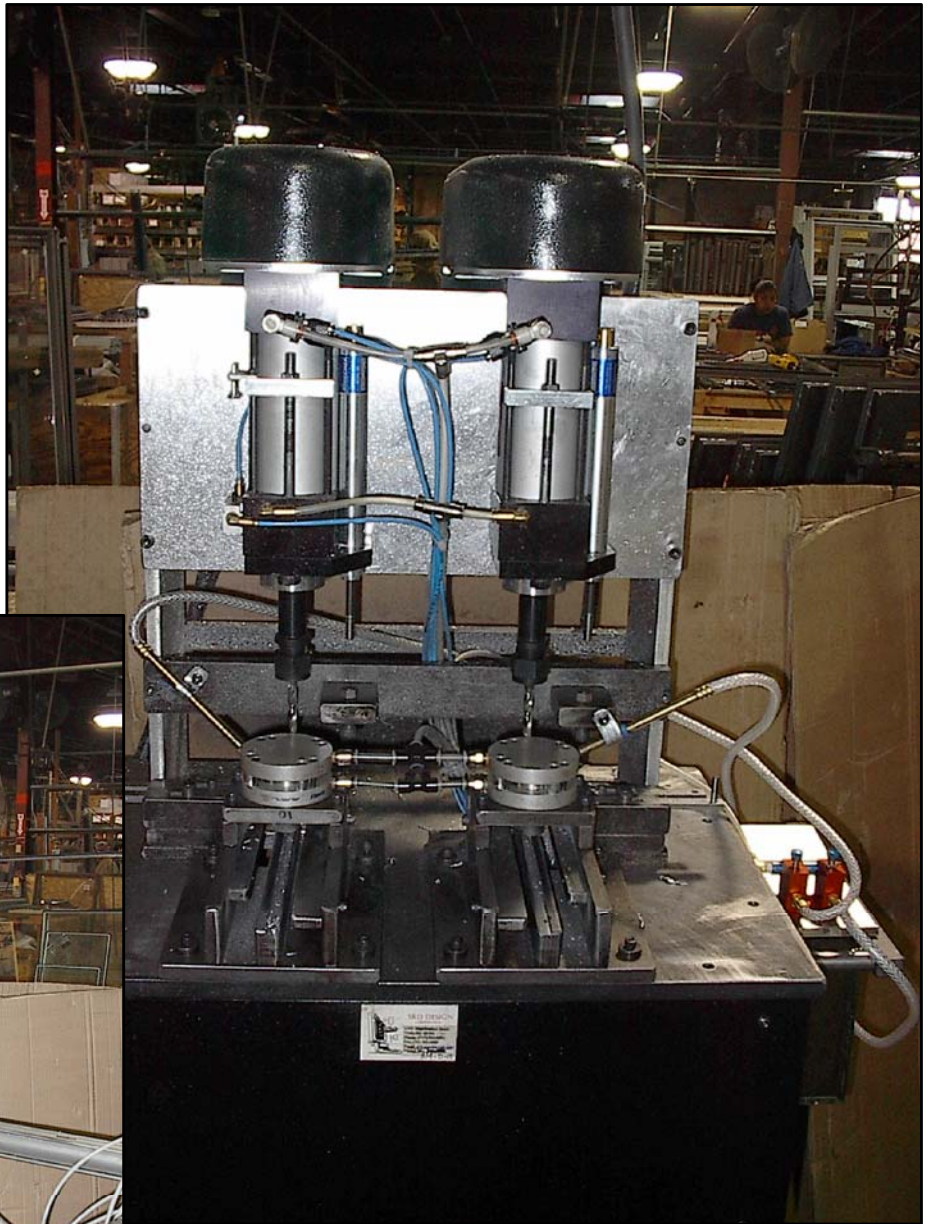
Scale: FULL

Project Title: DUAL HEAD MACHINE

Rev:

Project No:

Series:



SRD Design

PH: 717-699-0005
 FX: 717-699-0055

SRD Design Corporation

Drawn: SRD

Date: 05/01

Part Name:

Scale: FULL

Project Title: DUAL DRILL MACHINE

Rev:

Project No:

Series:



SRD Design

PH: 717-699-0005
 FX: 717-699-0055

SRD Design Corporation

Drawn: SRD

Date: 05/01

Part Name:

Scale: FULL

Project Title: AW CYCLE MACHINE

Rev:

Project No:

Series:



SRD Design

PH: 717-699-0005
 FX: 717-699-0055

SRD Design Corporation

Drawn: SRD

Date: 05/01

Part Name:

Scale: FULL

Project Title: MULTI PROCESSING MAC

Rev:

Project No:

Series:



SRD Design

PH: 717-699-0005
FX: 717-699-0055

SRD Design Corporation

Drawn: SRD

Date: 05/01

Part Name:

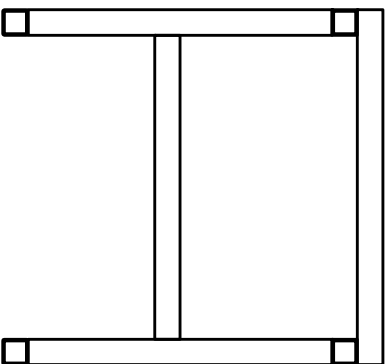
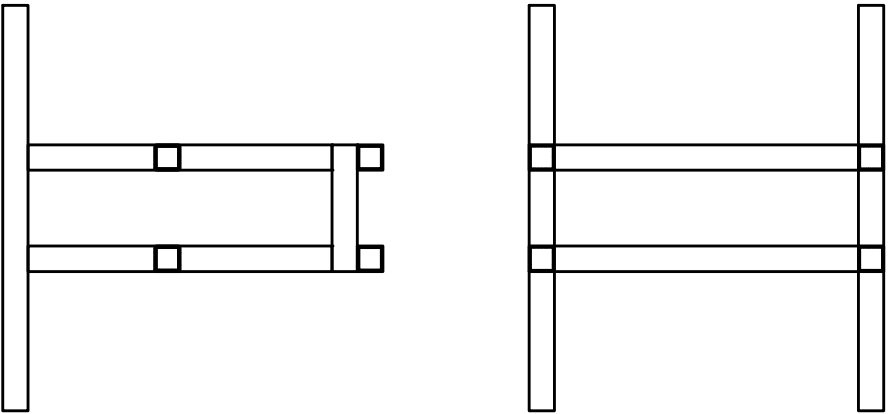
Scale: FULL

Project Title: BRIDGE-OVER PRESS

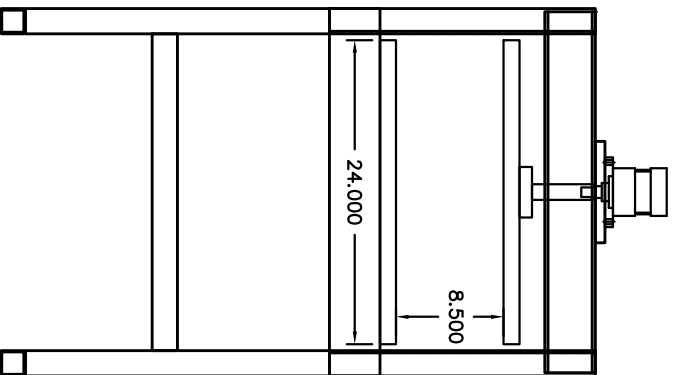
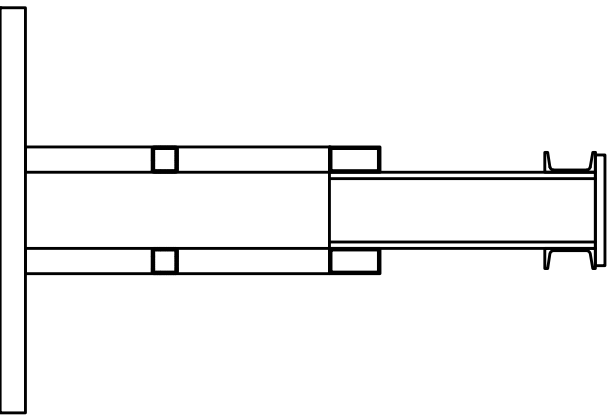
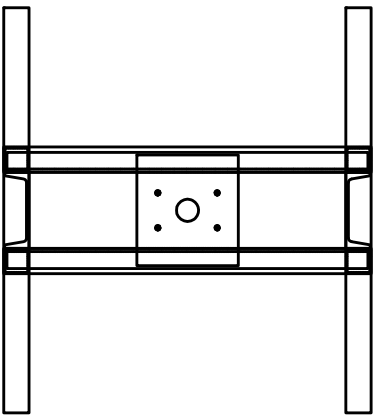
Rev:

Project No:

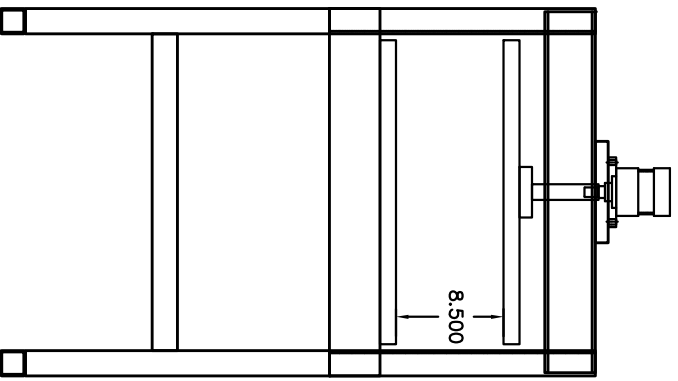
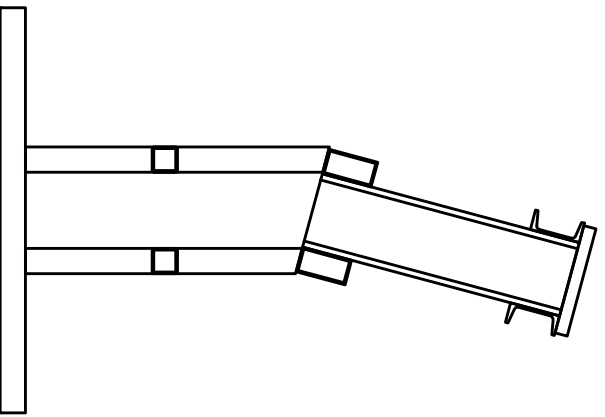
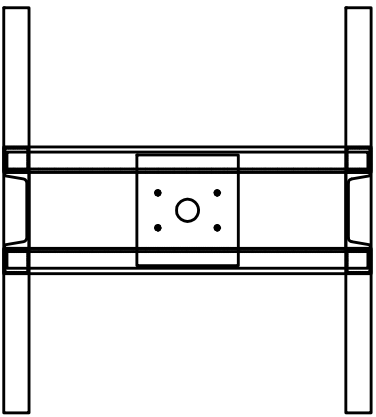
Series:



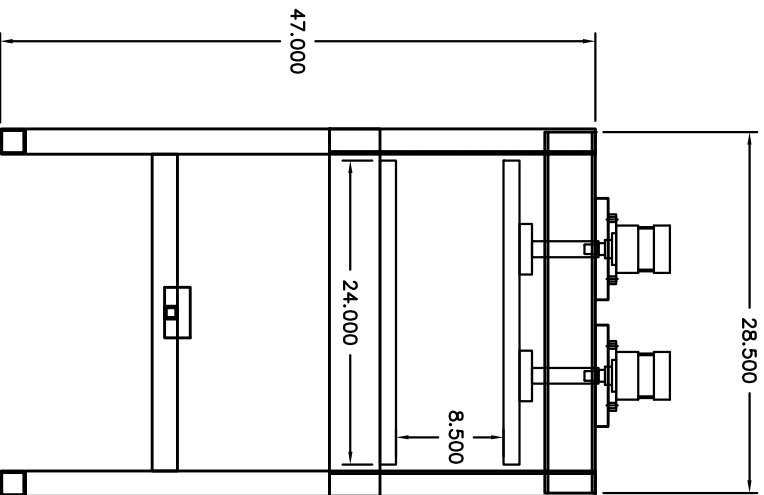
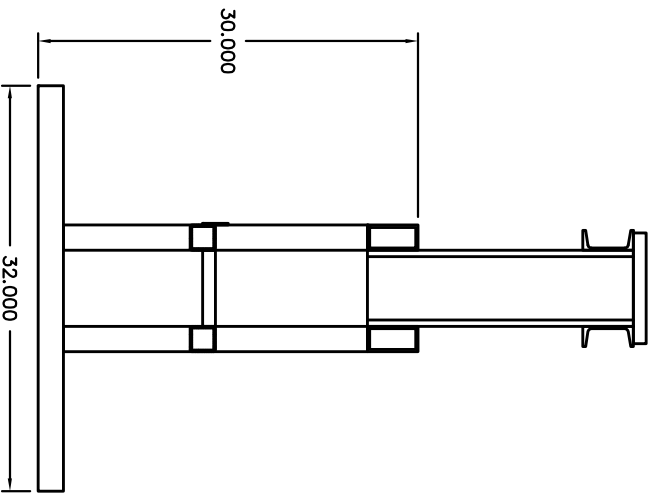
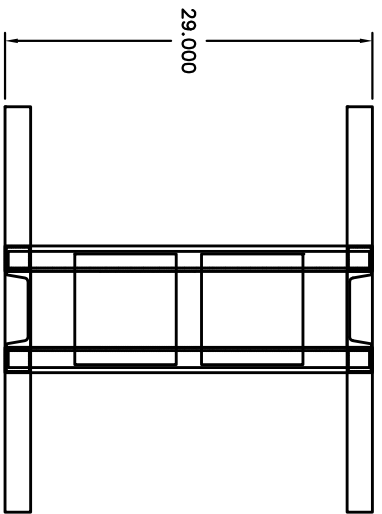
SRD Design	
PH: 717-699-0005	
FX: 717-699-0055	
<i>Drawn:</i> SRD	<i>Date:</i> 8-01-02
<i>Part Name:</i> DIE STAND	<i>Scale:</i> 1:10
<i>Project Title:</i> FLAT STAND	<i>Rev:</i>
<i>Project No:</i> DIE STAND-FLT	<i>Series:</i>



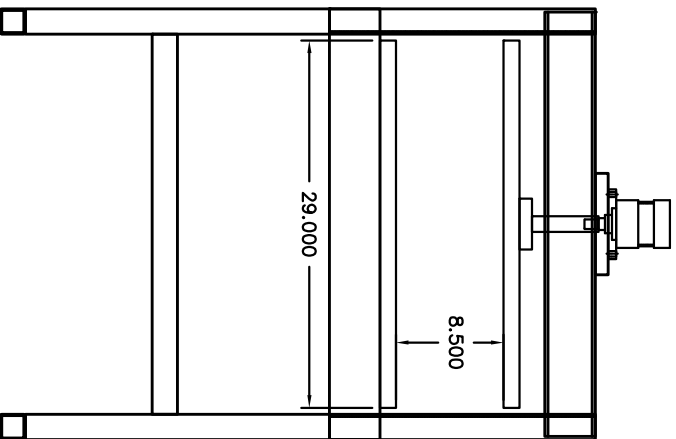
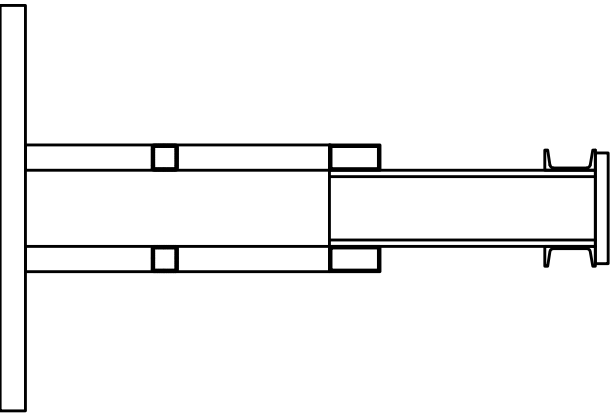
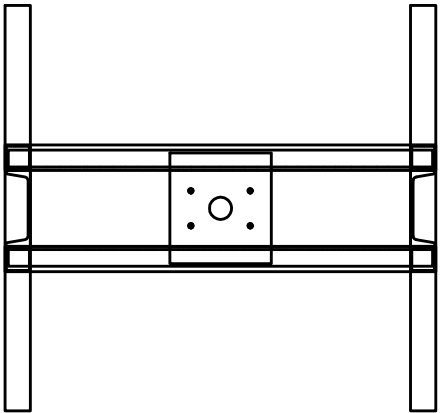
SRD Design		
PH: 717-699-0005		
FX: 717-699-0055		
<i>Drawn:</i> SRD	<i>Date:</i> 8-01-02	
<i>Part Name:</i> DIE STAND	<i>Scale:</i> 1:10	
<i>Project Title:</i> BRIDGE-OVER (SMALL)	<i>Rev:</i>	
<i>Project No:</i> DIE STAND-SM	<i>Series:</i>	



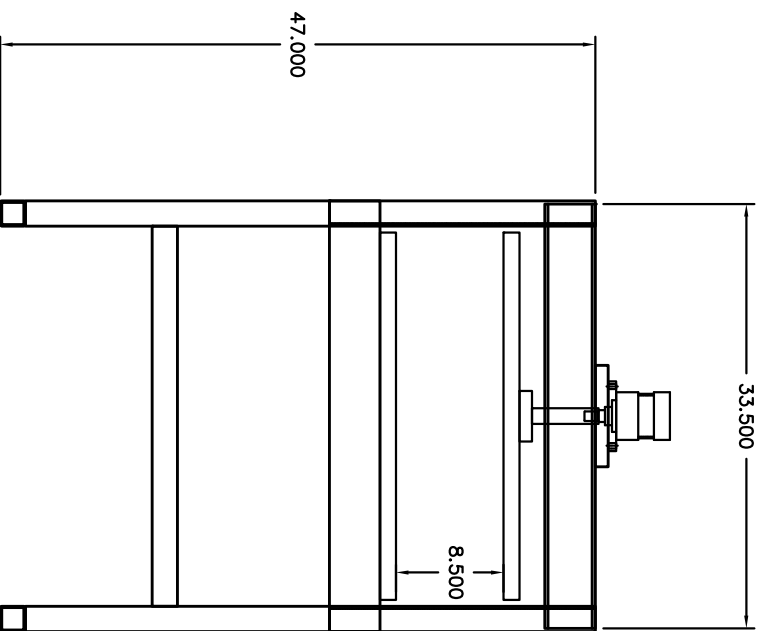
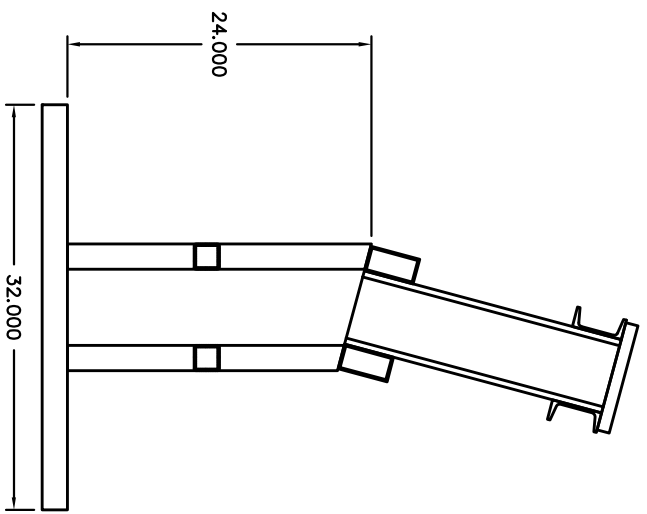
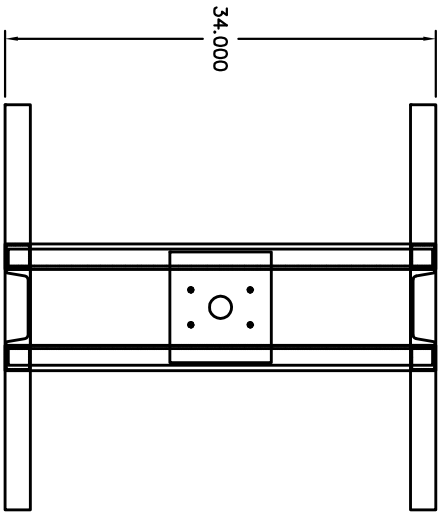
SRD Design		
PH: 717-699-0005		
FX: 717-699-0055		
<i>Drawn:</i> SRD	<i>Date:</i> 8-01-02	
<i>Part Name:</i> DIE STAND	<i>Scale:</i> 1:10	
<i>Project Title:</i> BRI-OVER (SM. TILT)	<i>Rev:</i>	
<i>Project No:</i> DIE STAND-SM-T	<i>Series:</i>	



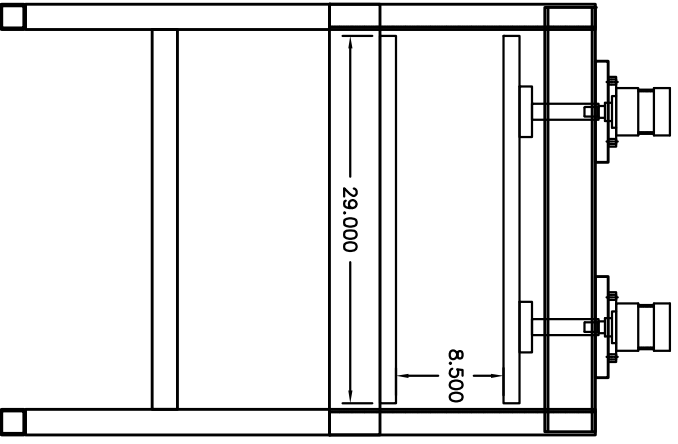
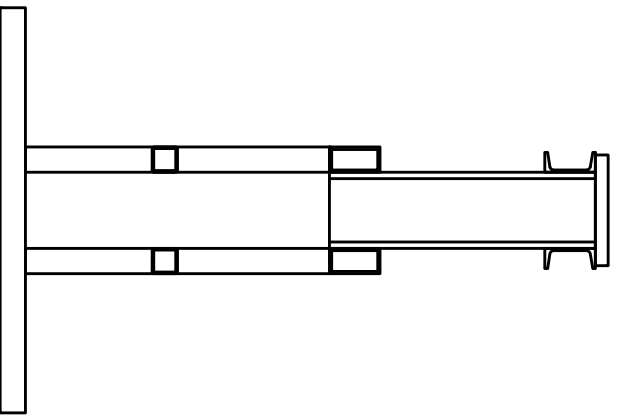
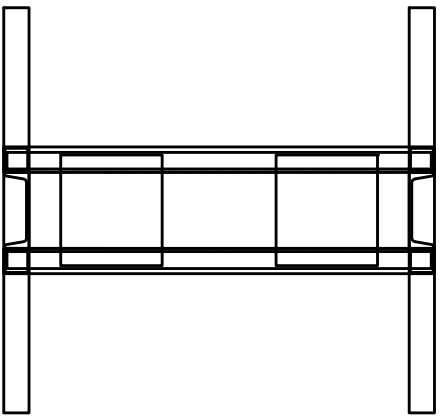
SRD Design	
PH: 717-792-6501	
FX: 717-792-6602	
<i>Drawn:</i> SRD	<i>Date:</i> 8-01-02
<i>Part Name:</i> DIE STAND	<i>Scale:</i> 1:10
<i>Project Title:</i> BRIDGE-OVER (DOUBLE)	<i>Rev:</i>
<i>Project No:</i> DIE STAND-DB-SM	<i>Series:</i>



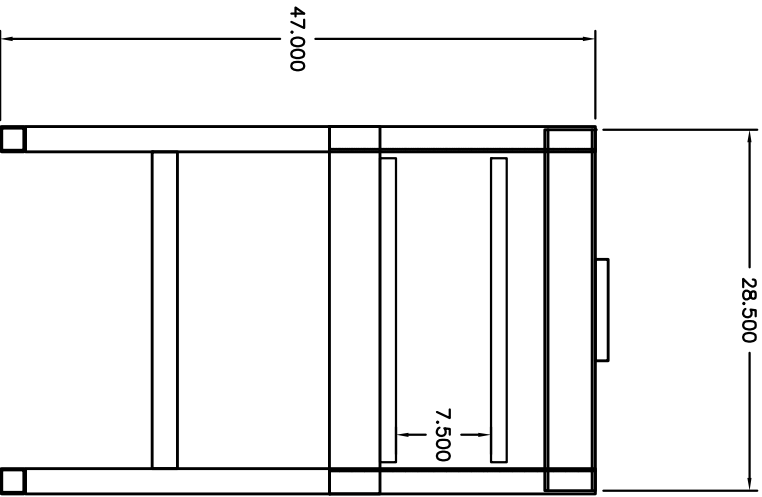
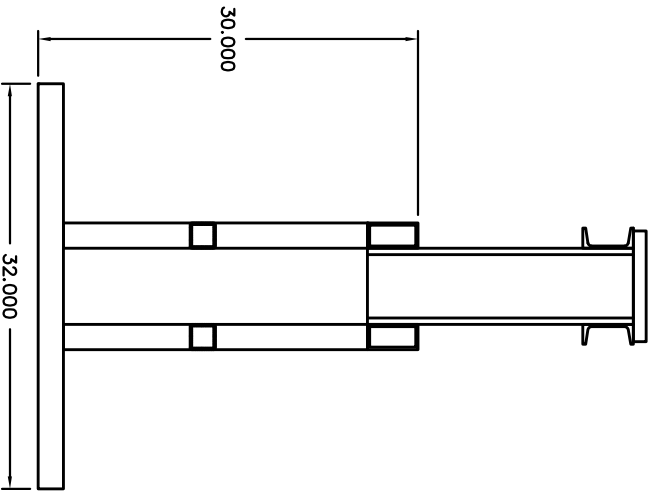
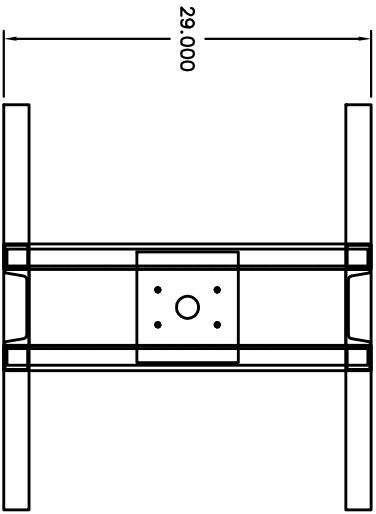
SRD Design		
PH: 717-699-0005		
FX: 717-699-0055		
<i>Drawn:</i> SRD	<i>Date:</i> 08-01-02	
<i>Part Name:</i> DIE STAND	<i>Scale:</i> 1:10	
<i>Project Title:</i> BRIDGE-OVER (LARGE)	<i>Rev:</i>	
<i>Project No:</i> DIE STAND-5	<i>Series:</i>	



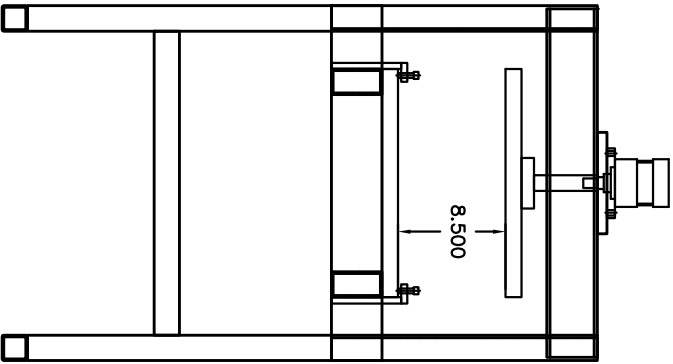
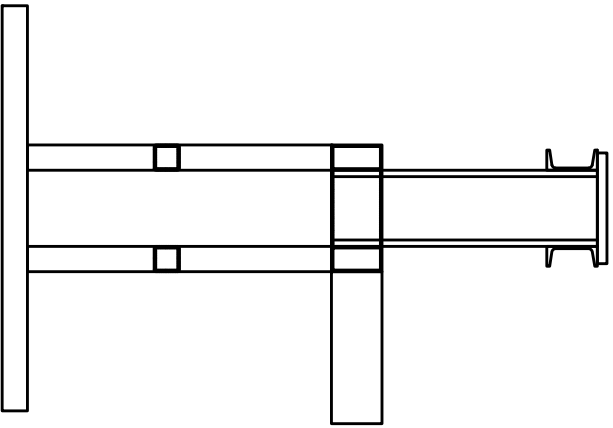
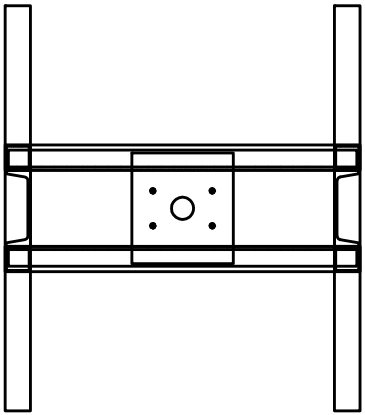
SRD Design	
PH: 717-792-6501	
FX: 717-792-6602	
<i>Drawn:</i> SRD	<i>Date:</i> 8-01-02
<i>Part Name:</i> DIE STAND	<i>Scale:</i> 1:10
<i>Project Title:</i> BRI-OVER (LG, TILT)	<i>Rev:</i>
<i>Project No:</i> DIE STAND-LG-T	<i>Series:</i>



SRD Design	
PH: 717-699-0005	
FX: 717-699-0055	
<i>Drawn:</i> SRD	<i>Date:</i> 8-01-02
<i>Part Name:</i> DIE STAND	<i>Scale:</i> 1:10
<i>Project Title:</i> BRIDGE-OVER (DOUBLE)	<i>Rev:</i>
<i>Project No:</i> DIE STAND-DB	<i>Series:</i>



SRD Design		
PH: 717-792-6501		
FX: 717-792-6602		
<i>Drawn:</i> SRD	<i>Date:</i> 8-01-02	
<i>Part Name:</i> DIE STAND	<i>Scale:</i> 1:10	
<i>Project Title:</i> BRIDGE-OVER (HEAVY)	<i>Rev:</i>	
<i>Project No:</i> DIE STAND-HV	<i>Series:</i>	

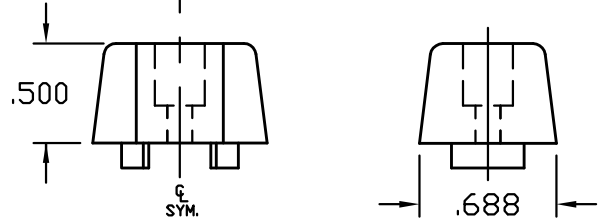
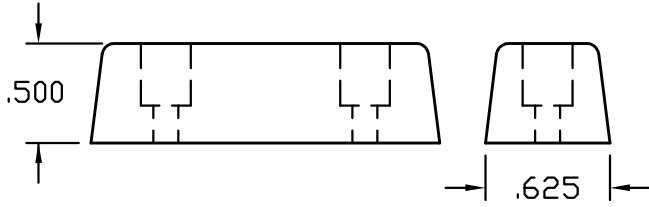
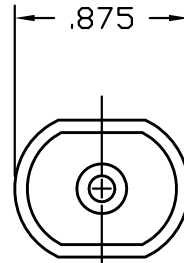
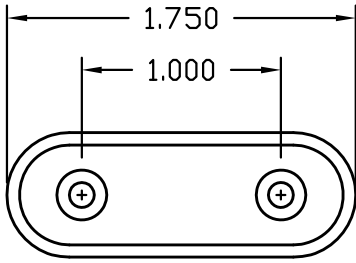


SRD Design		
PH: 717-699-0005		
FX: 717-699-0055		
<i>Drawn:</i> SRD	<i>Date:</i> 10-23-01	<i>Scale:</i> 1:10
<i>Part Name:</i> DIE STAND		<i>Rev:</i>
<i>Project Title:</i> BUMP DIE STAND		<i>Series:</i>
<i>Project No:</i> DIE STAND-BUMP		

BUMPERS

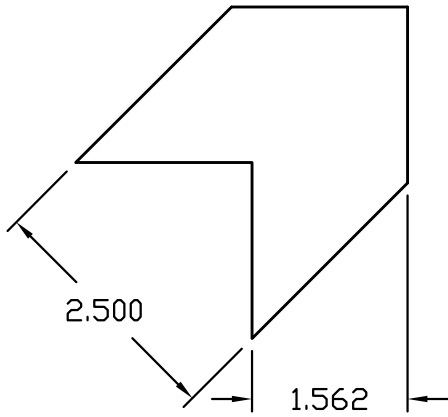
SRD-009

SRD-044

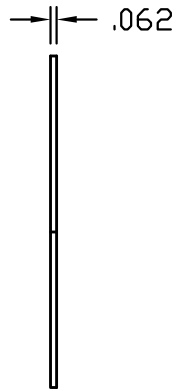


CORNER KEYS

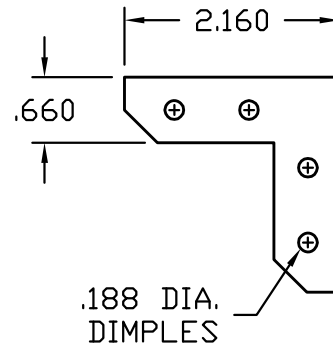
SRD-007



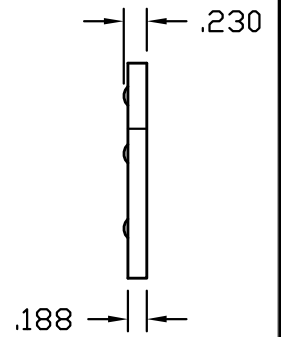
MAT: ALUMINUM



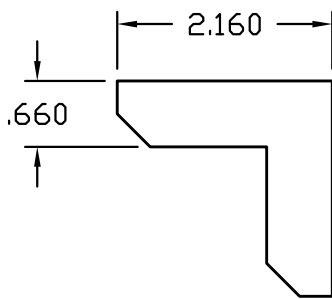
SRD-034



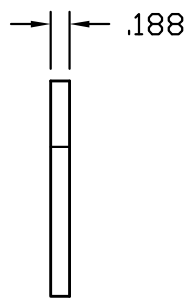
MAT: ALUMINUM



SRD-035

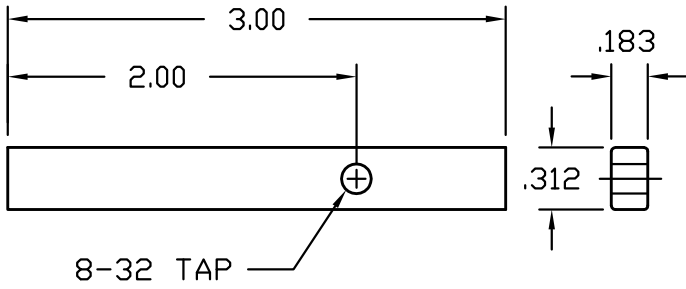


MAT: ALUMINUM



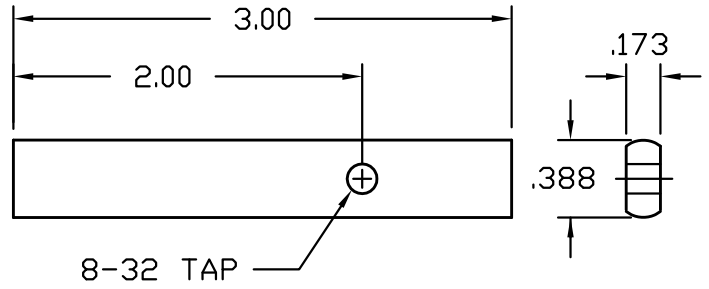
PIVOT BARS

SRD-002



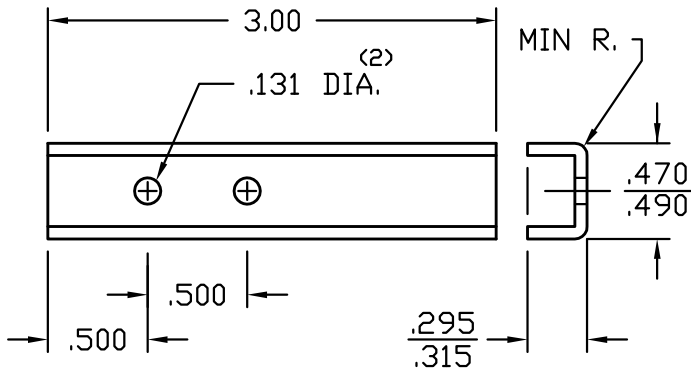
MAT: STAINLESS STEEL

SRD-006



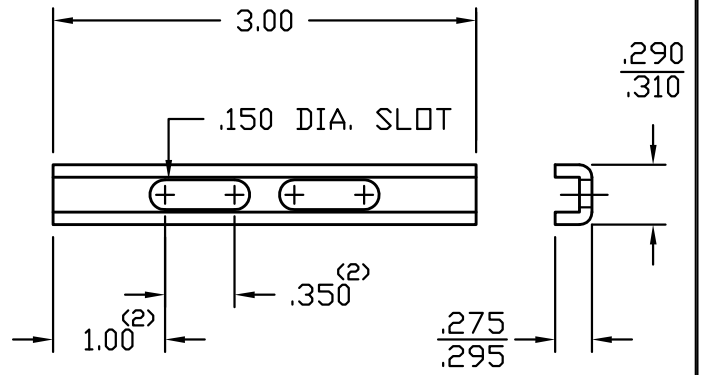
MAT: STAINLESS STEEL

SRD-038



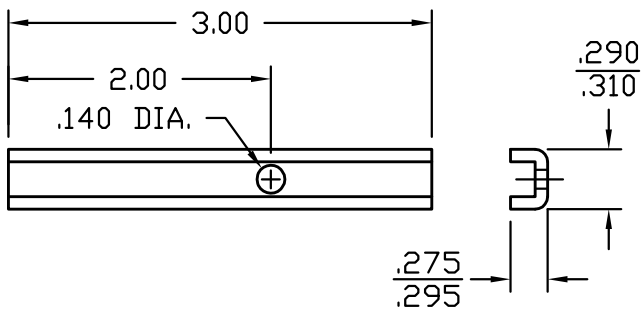
MAT: STAINLESS STEEL

SRD-056



MAT: PLATED STEEL

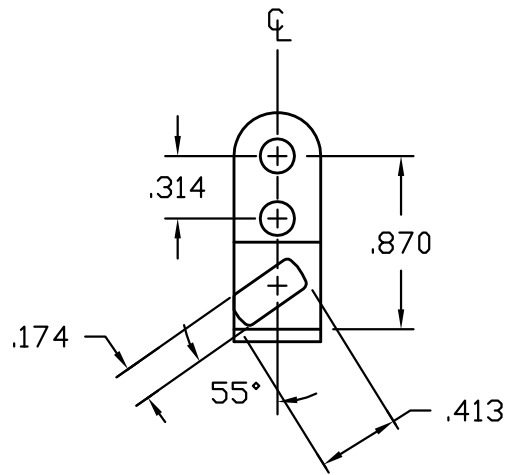
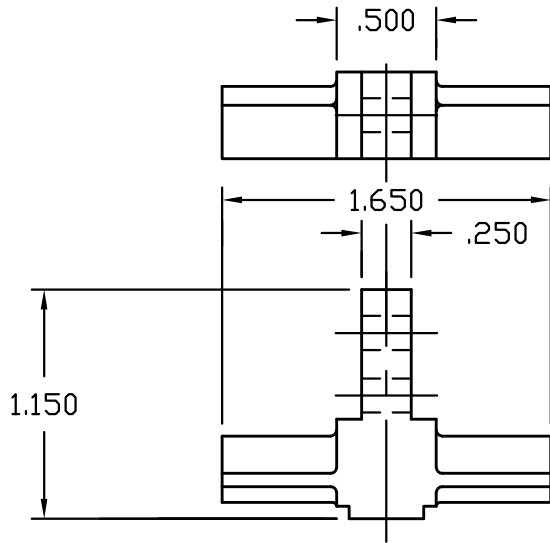
SRD-057



MAT: PLATED STEEL

PIVOT BARS

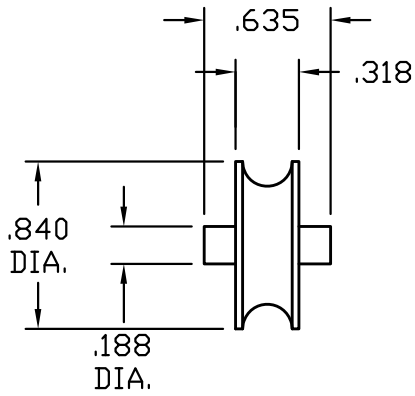
SRD-058



MAT: ZINC DIE CAST

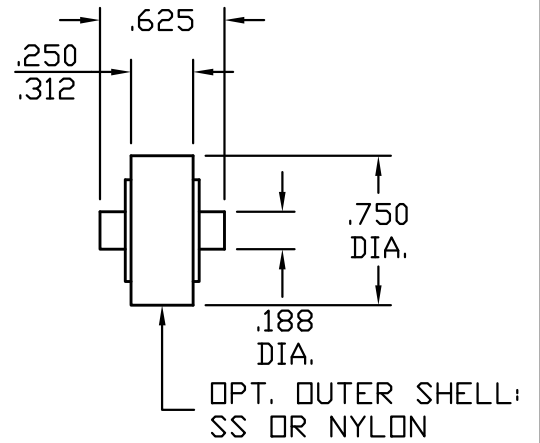
ROLLERS

SRD-012



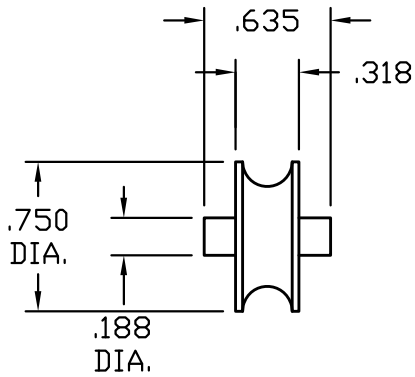
MAT: PLATED STEEL WITH BALL BEARINGS

SRD-015



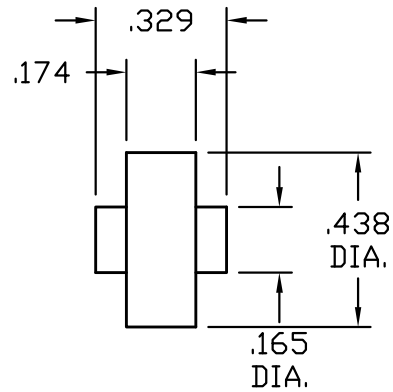
MAT: SS WITH BALL BEARINGS

SRD-024



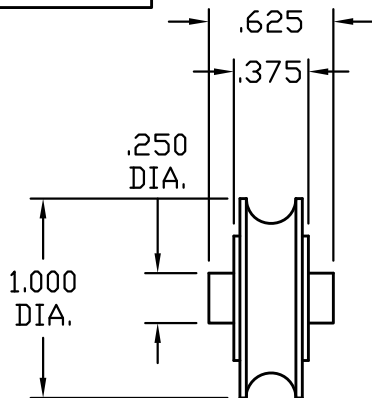
MAT: PLATED STEEL WITH BALL BEARINGS
OPT. MAT: SS WITH BALL BEARINGS

SRD-028



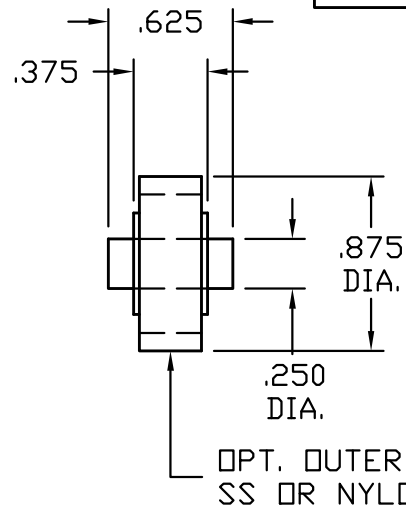
MAT: SS WITH BALL BEARINGS

SRD-029



MAT: PLATED STEEL WITH BALL BEARINGS
OPT. MAT: SS WITH BALL BEARINGS

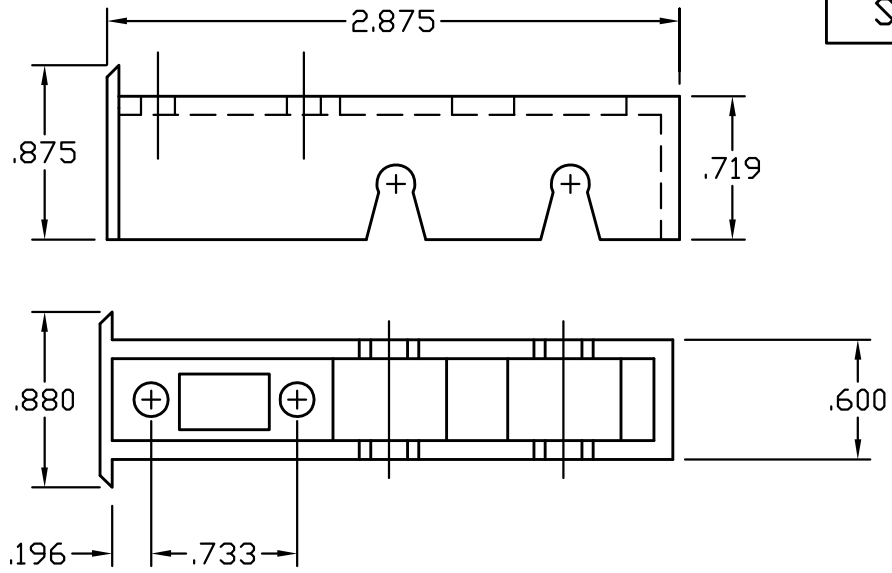
SRD-043



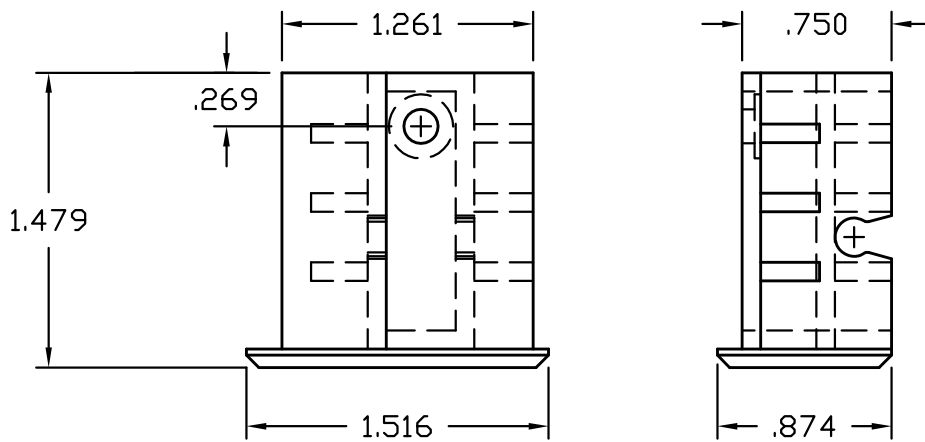
OPT. OUTER SHELL:
SS OR NYLON

ROLLER HOUSING SASH CAPS

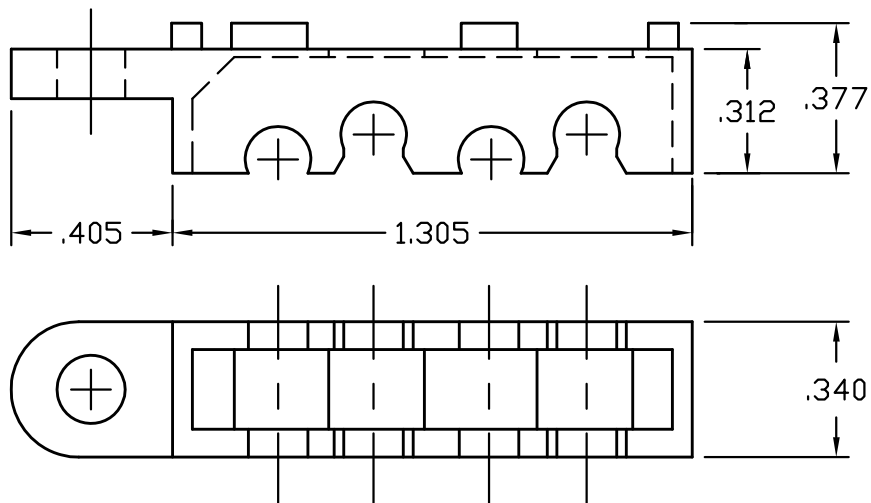
SRD-014



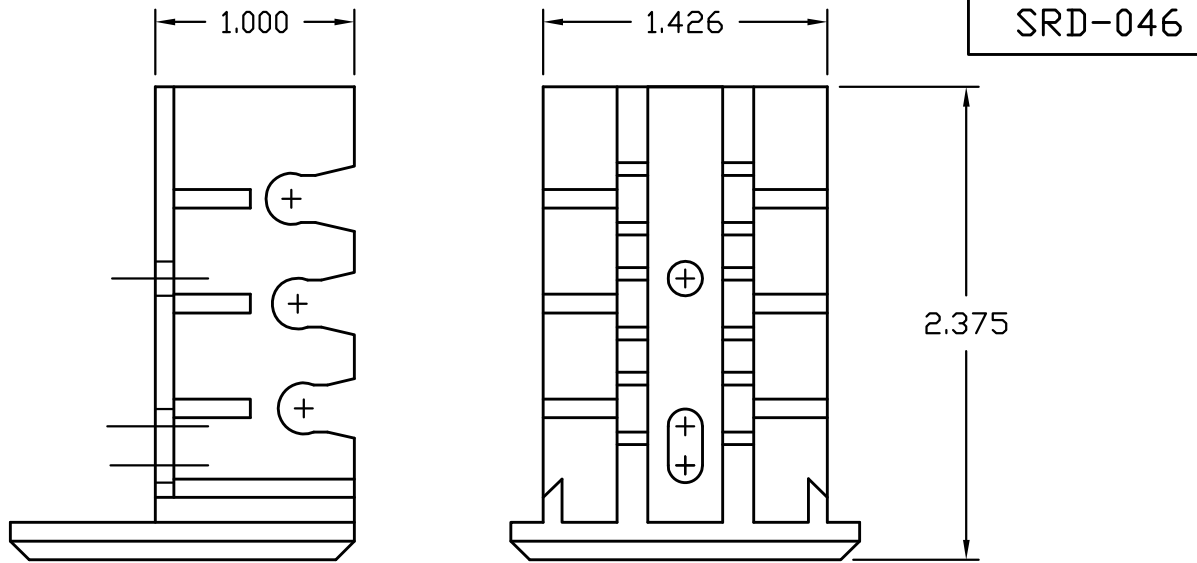
SRD-022 RH
SRD-023 LH



SRD-033

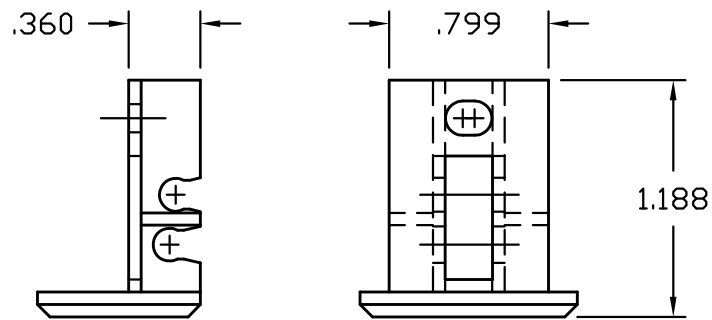


ROLLER HOUSING SASH CAPS



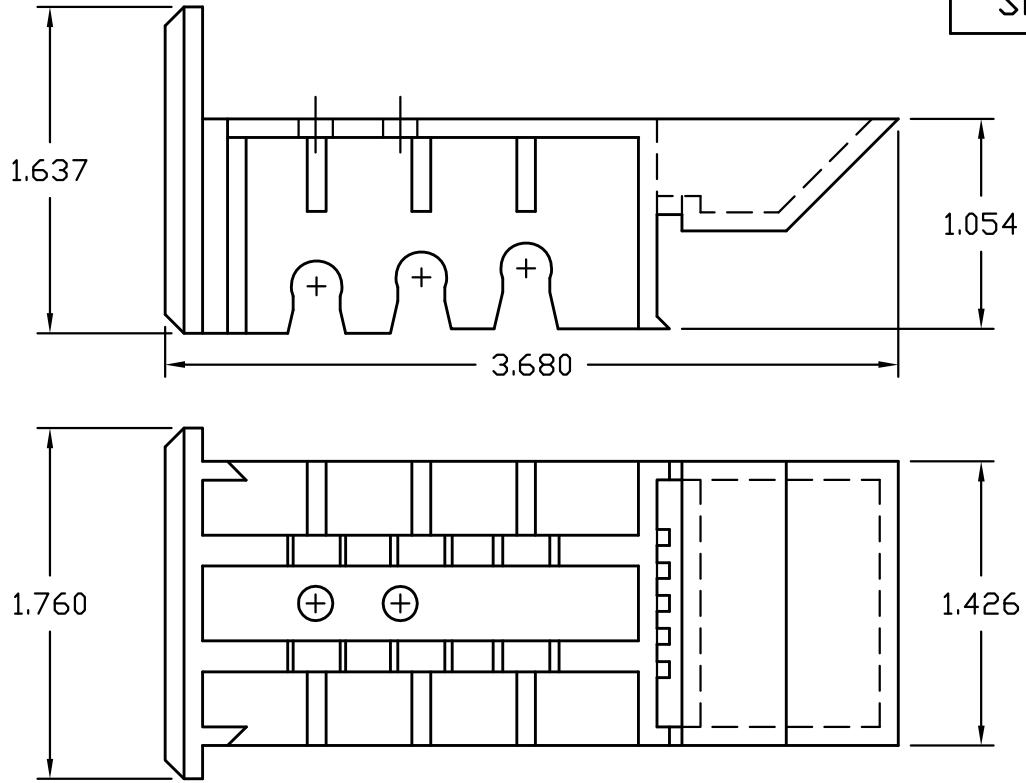
SRD-046

SRD-053



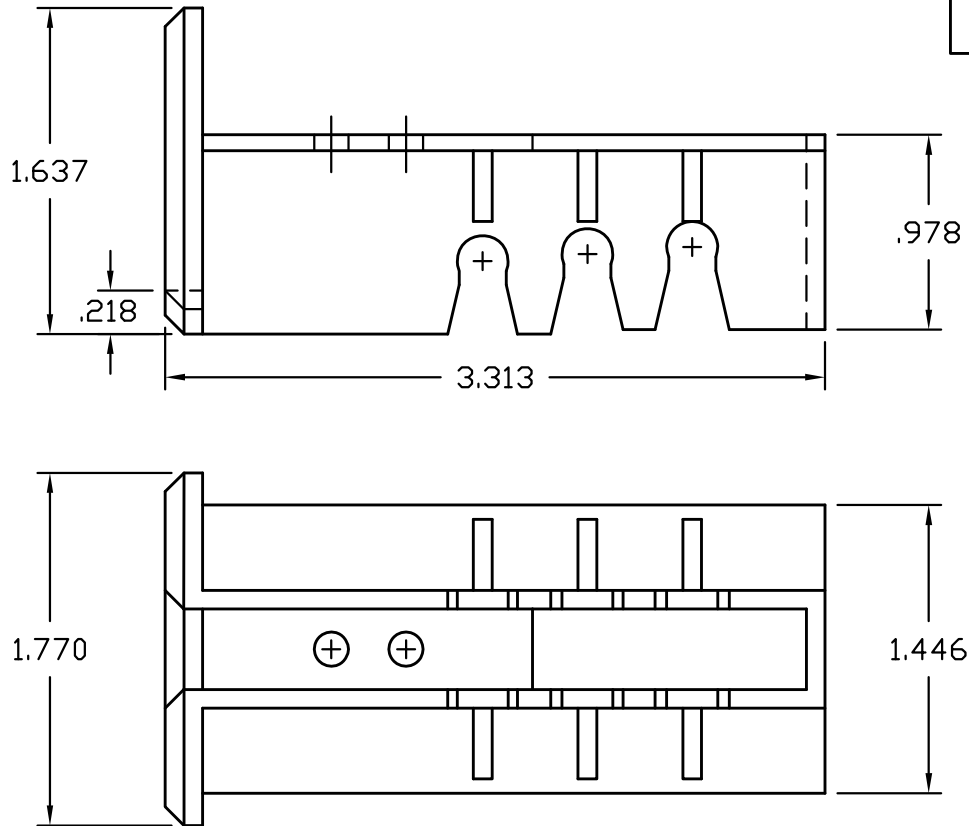
ROLLER HOUSING SASH CAPS

SRD-060

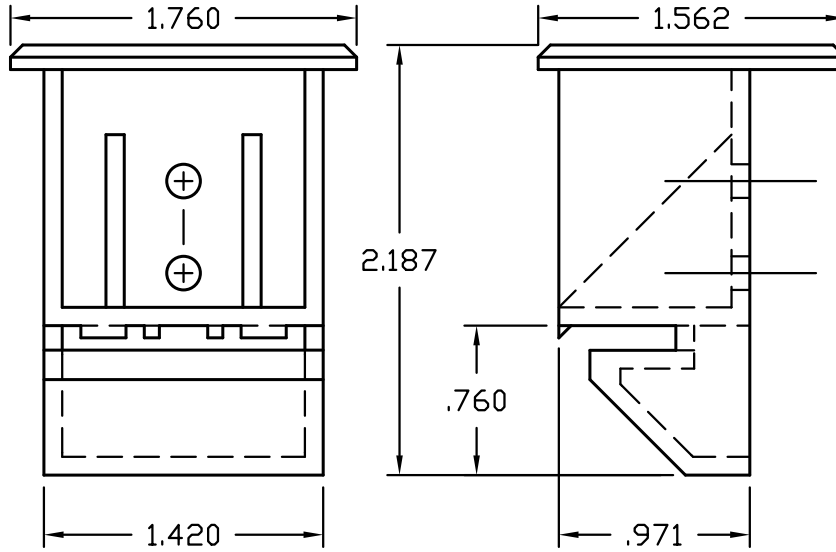


COMBINATION ROLLER HOUSING AND BLOCK & TACKLE SASH CAP

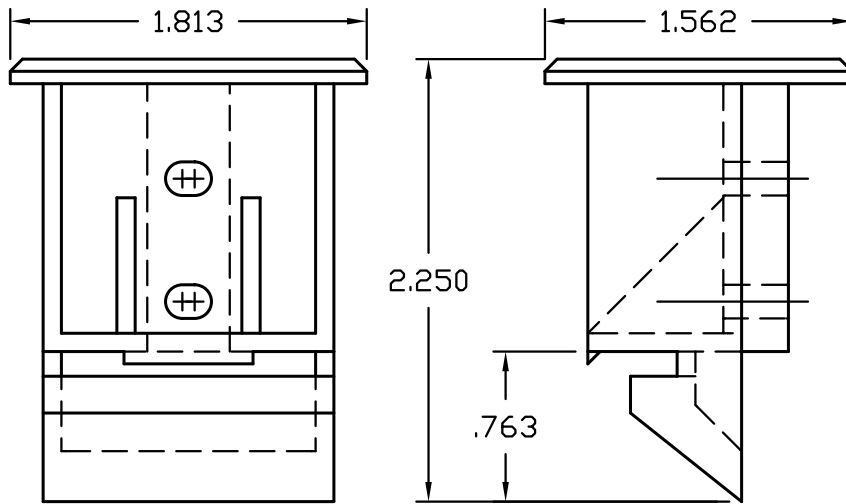
SRD-067



SASH CAPS (BLOCK & TACKLE)



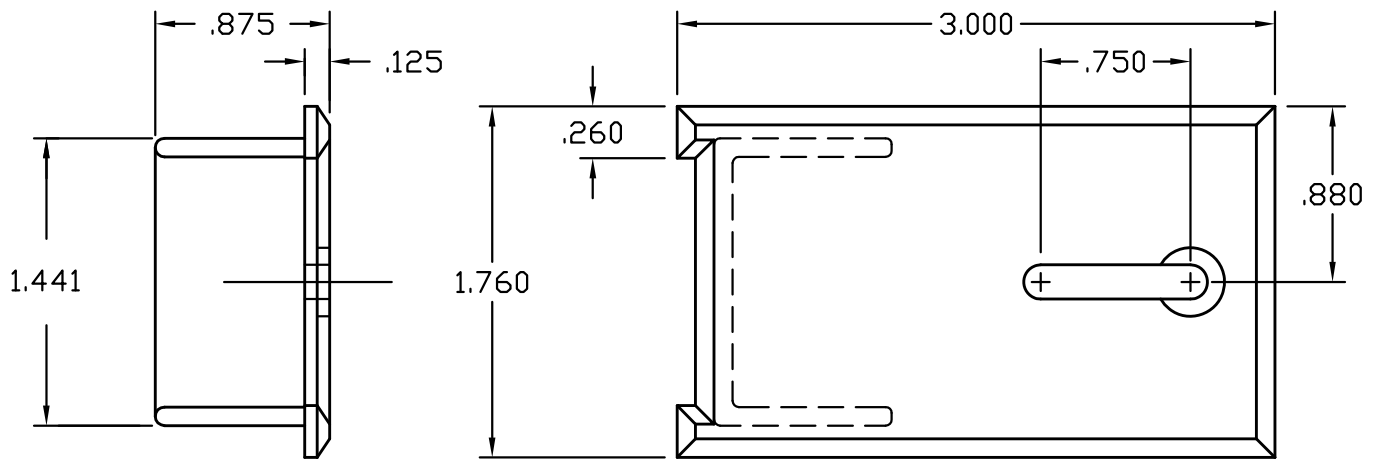
SRD-016



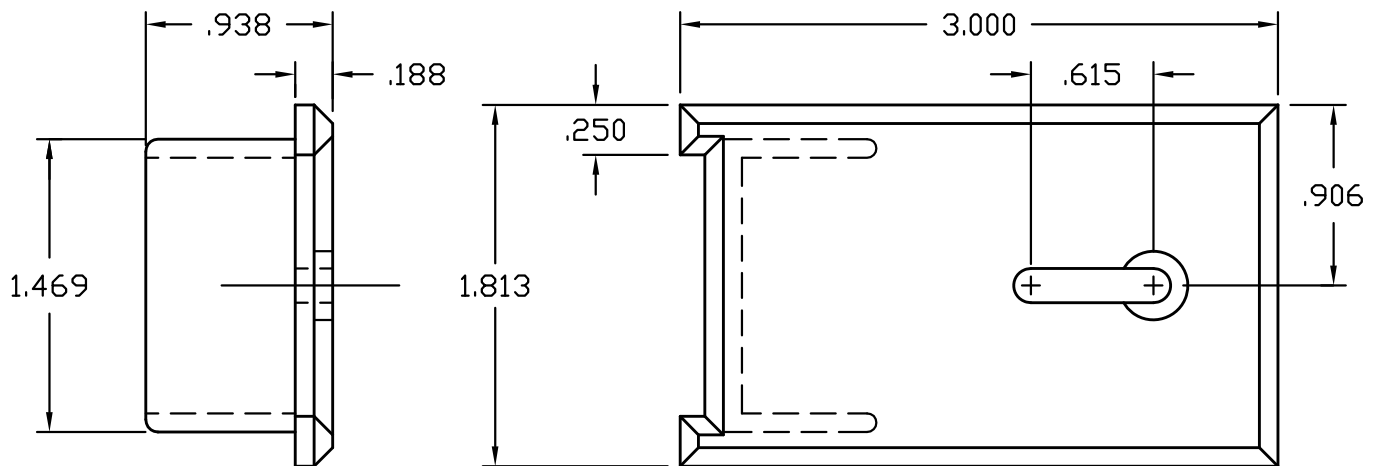
SRD-025

SASH CAPS (DH SIDE LOAD)

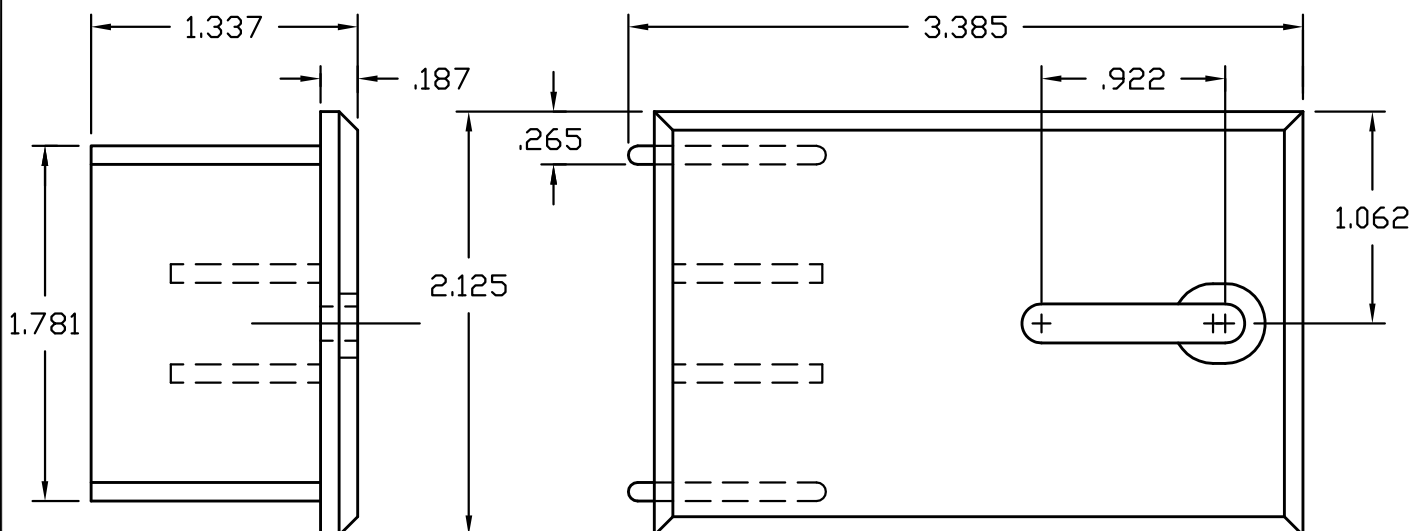
SRD-017



SRD-026

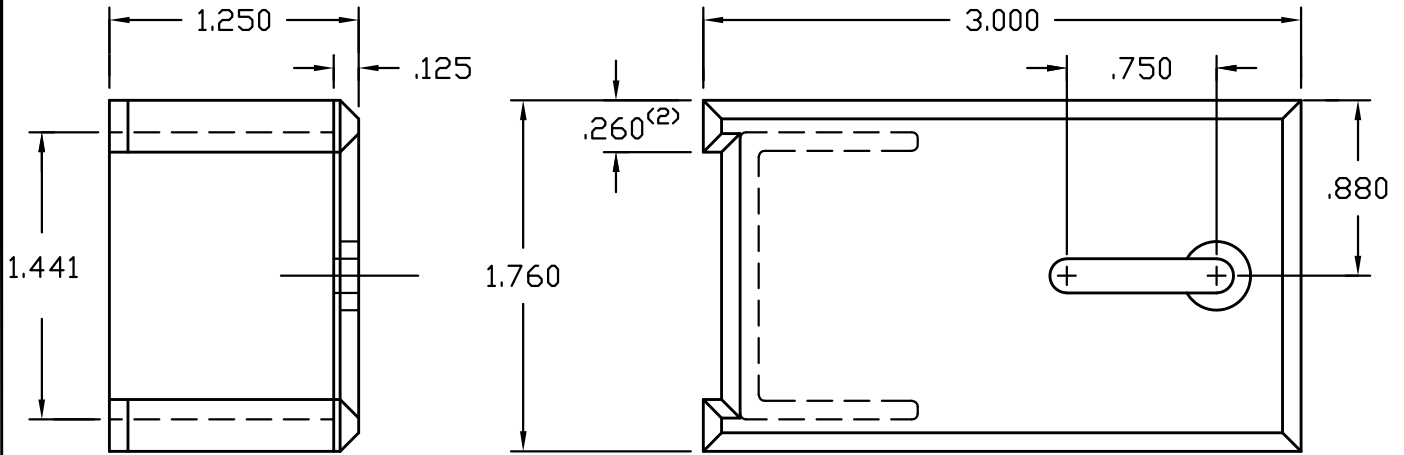


SRD-027

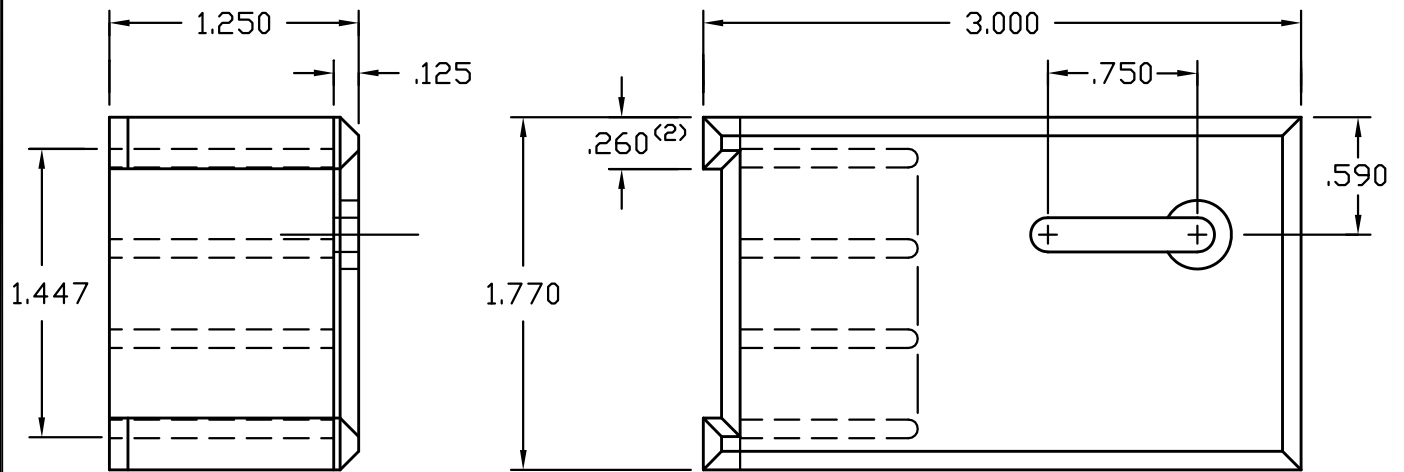


SASH CAPS (DH SIDE LOAD)

SRD-059

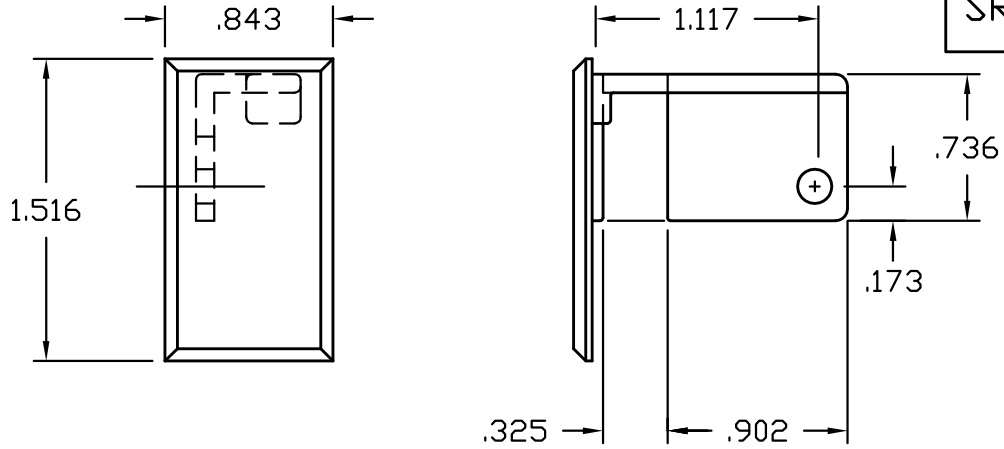


SRD-066

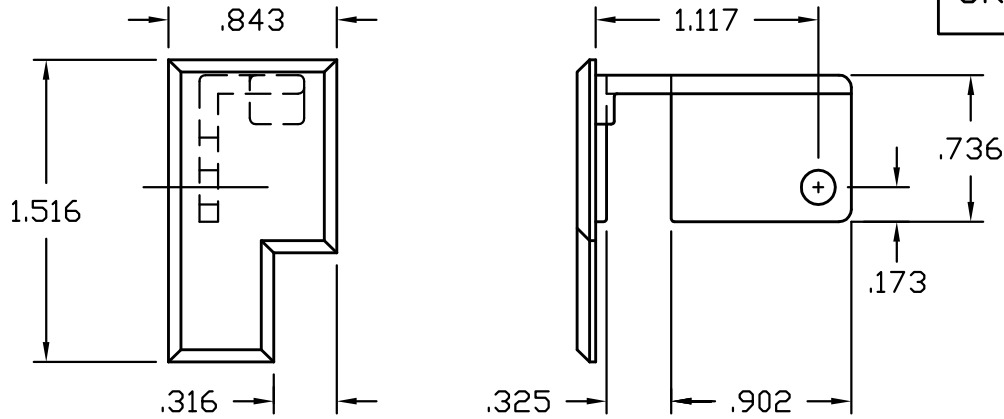


SASH CAPS (DH TILT)

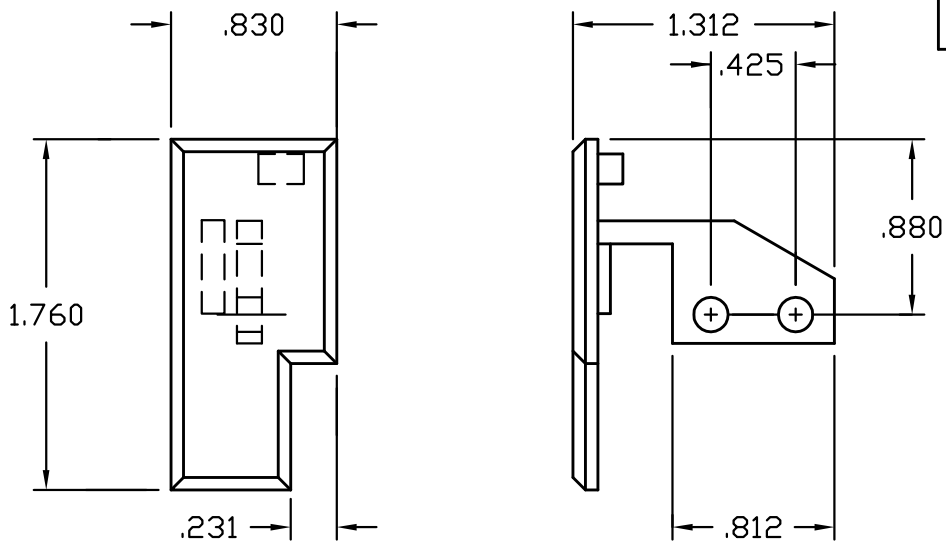
SRD-018 RH
SRD-019 LH



SRD-020 RH
SRD-021 LH

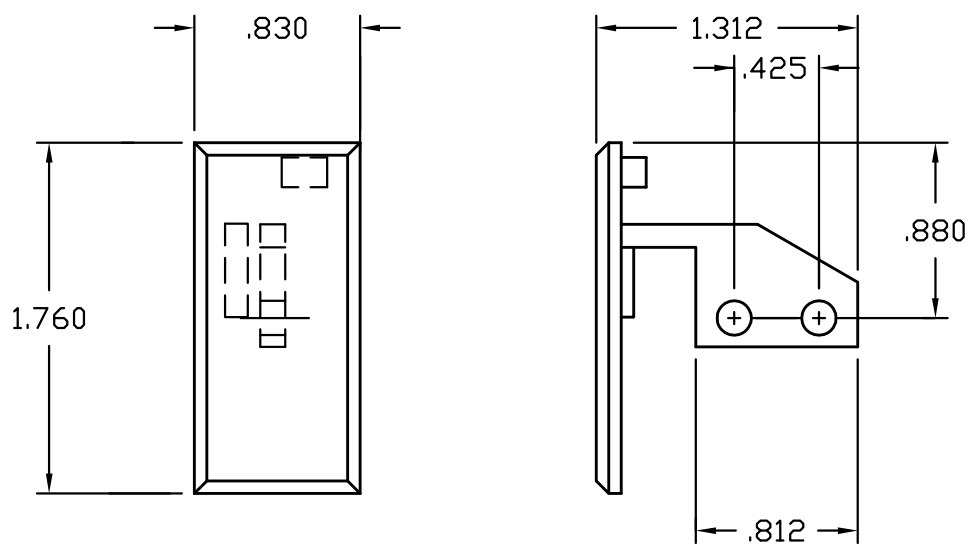


SRD-030 RH
SRD-030 LH



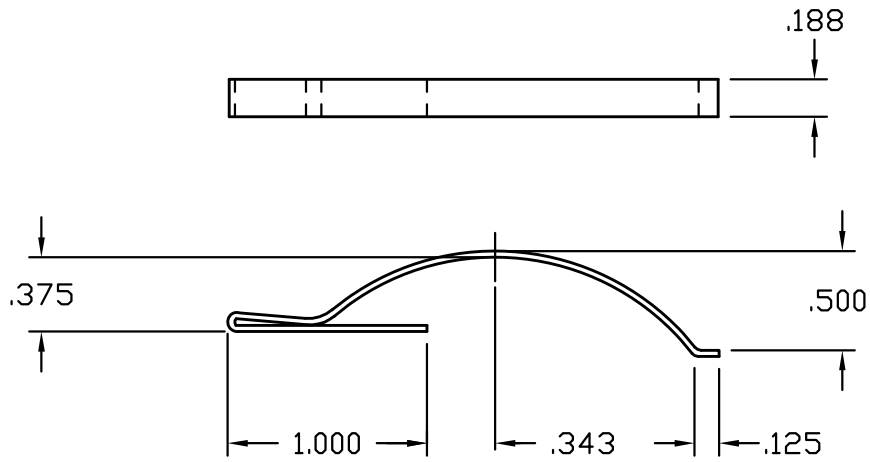
SASH CAPS (DH TILT)

SRD-031 RH
SRD-031 LH



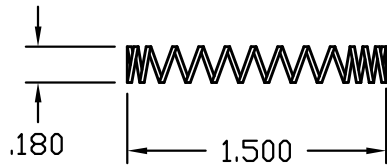
SPRINGS

SRD-001
SCREEN SPRING



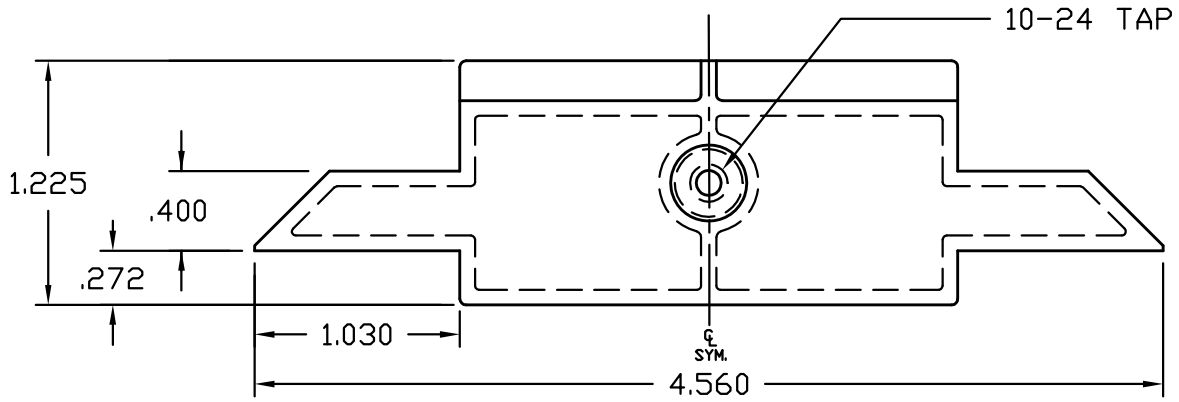
SRD-003

TILT LATCH
SPRING

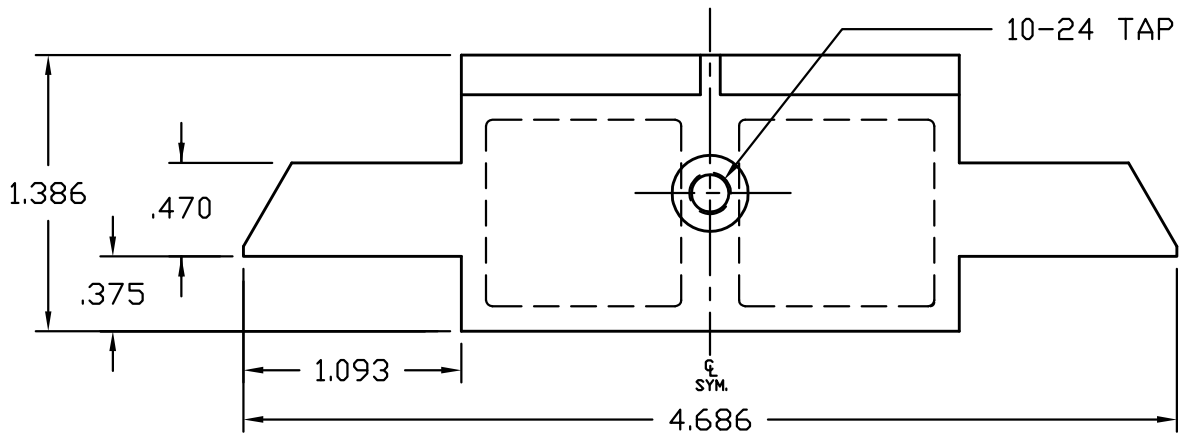


ZINC DIE CAST TILT LATCHES

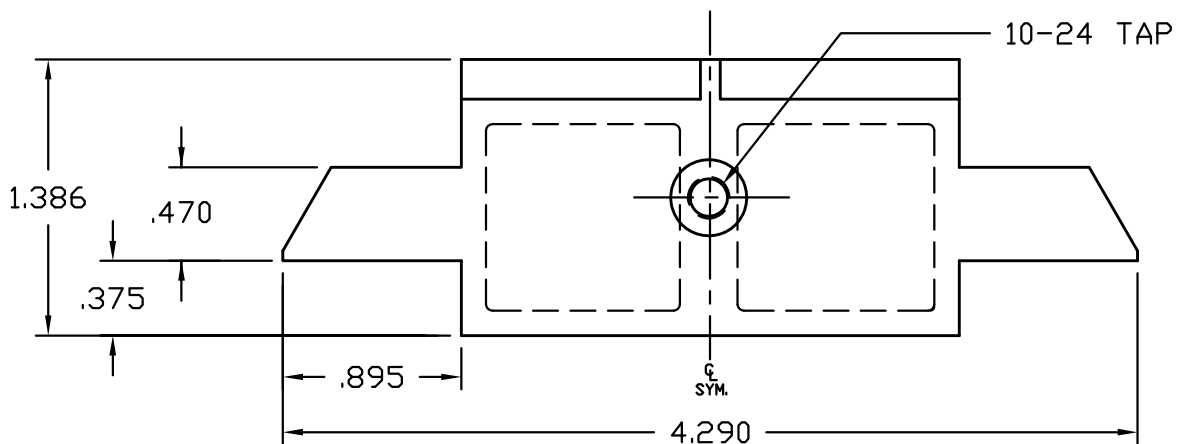
SRD-011



SRD-013

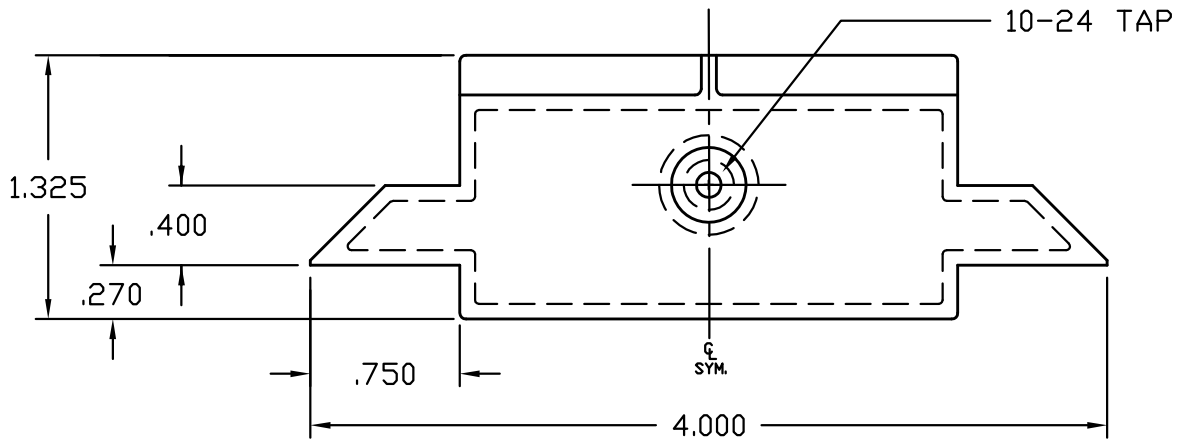


SRD-039

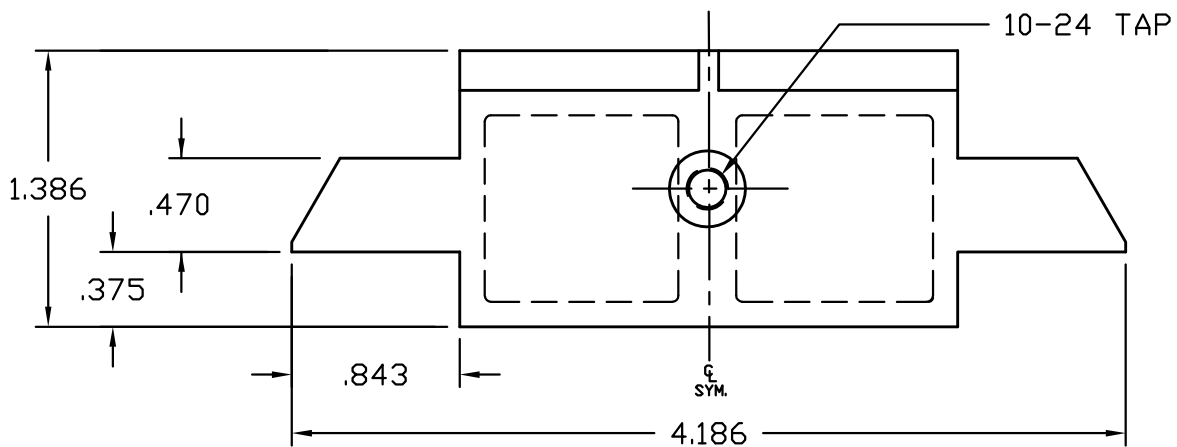


ZINC DIE CAST TILT LATCHES

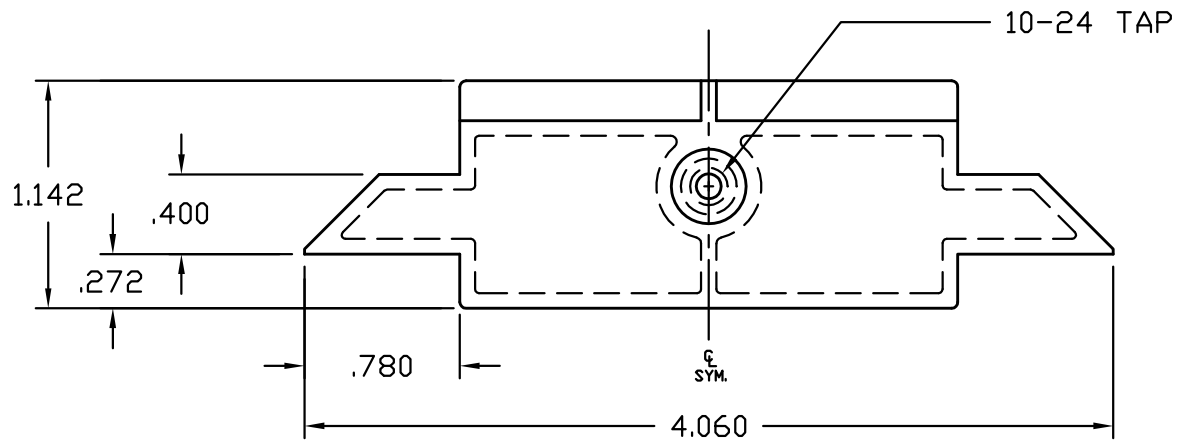
SRD-042



SRD-061



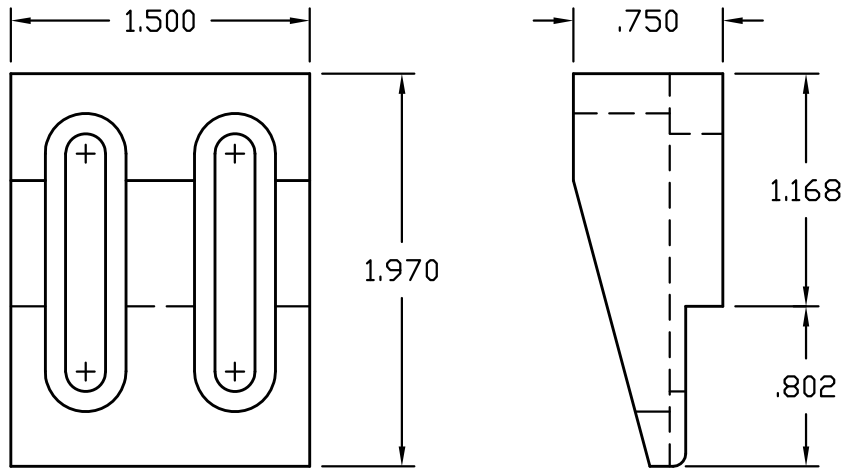
SRD-068



MISCELLANEOUS

SRD-045

RISER BLOCK



SRD-051

SNUBBER

